



QUICK SCREEN slat fencing system

What you'll find inside

V1.6

Quickscreen Horizontal Slat Fencing - Page 2 – 19

Quickscreen Horizontal Slat Gate Systems - Page 20 – 27

Quickscreen Vertical Slat Fencing - Page 28 – 36

Quickscreen Vertical Slat Gate Systems - Page 37 – 41

Quickscreen Full Privacy System - Page 38 – 51

Quickscreen Sliding Gates - Page 52 – 55

QUICK SCREENTM

**The leading slat
fencing system**

**Designed &
manufactured by
Aluminum Outlet**

**Save time
& money**

Quickscreen horizontal slat system fencing system provides you the most Premier slat system in the market. We have been supplying horizontal slat systems to the fencing and construction sector for over 15 years, so our system is proven and tested. Our range is designed with current architectural trends in mind providing that clean contemporary look.

Our 2.56" and 6" slat systems are available to you for immediate delivery from Our warehouses as well as 4" & 1" slats available for our distributor network on indent supply.

We offer an array of install options including.

1. 2.56" Post and side frame system. – easy assembly system with comprehensive installation options
2. Our new 4" post and side frame system designed to handle all types of extreme weather including wind loads up to 170 Mph or for that customer looking for a Bulkier look.
3. Our new 3way post system (one post does all) – Premium finish with slats inserting into the post providing a streamline finish.
4. Our original 1way, 2way. Cnr post system. – premium finish same as 3way post just different posts for different applications.

Quickscreen Horizontal slat features and benefits

- Unique patented friction assembly, eliminating the need to use fixings to secure off the slats (quick assembly)
- Modular system which is easily width and height adjustable. Simply cut to suit opening.
- Array of install options to cover all types of applications.
- Proven system with over 15 years supplying to the market.
- Product engineered to meet all types of weather conditions.
- System provides privacy whilst still allowing airflow between slats.
- Complete system including gates and modular sliding gates options.
- Limited lifetime warranty

Why Quickscreen?

Due to our extensive experience with horizontal slat fencing we have perfected the system to provide you a slat system that is:

- Trial and tested to meet all types of applications and weather conditions.
- Very easy to assemble and install.
- Most importantly the business model has been perfected providing you with a product with very healthy margins and return.

Call us for more information on our Reseller and Distributor business models.

HIGHEST QUALITY FINISHES

Our range of genuine AAMA 2603 powder coat finishes has been carefully selected to include the most sought after colors on offer.

All components are suitably pre-treated prior to powder coating and are applied by fully accredited coating facilities.



QUICK SCREEN HORIZONTAL SLAT DESIGN OPTIONS



2.56" SLAT BETWEEN POSTS



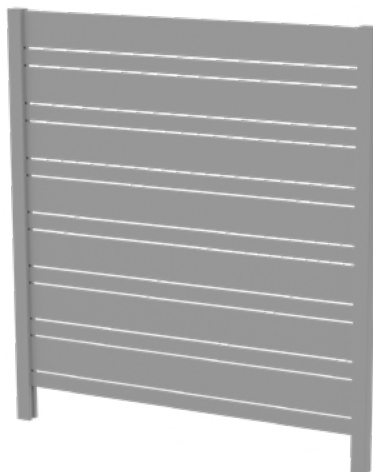
2.56" SLAT BETWEEN PILLARS



6" SLAT BETWEEN POSTS



6" SLAT BETWEEN PILLARS

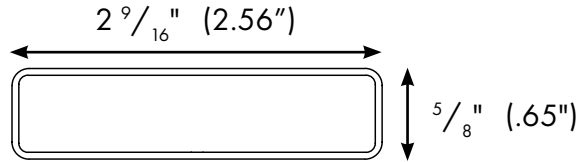


2.56" & 6" COMBO SLAT BETWEEN POSTS



2.56" & 6" COMBO SLAT BETWEEN PILLARS

QUICK SCREEN 2.56" STANDARD SLAT

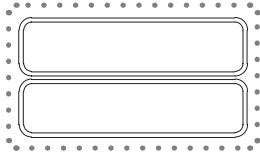


WALL THICKNESS: $\frac{1}{16}$ " (.06")
F*_{TU} - 262MPa (.06" wall)

QUICK SCREEN SLATS - 2 PACK

2.56" WIDE x 95" LONG

ORDER CODE: QSP-2415SLAT-2PK

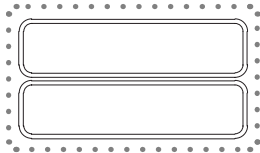


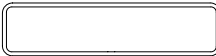
PROFILE	DESCRIPTION	LENGTH	QTY
	2.56" x .65" Slat	95"	2

QUICK SCREEN™ SLATS - 2 PACK

2.56" WIDE x 71" LONG

ORDER CODE: QSP-1800SLAT-2PK

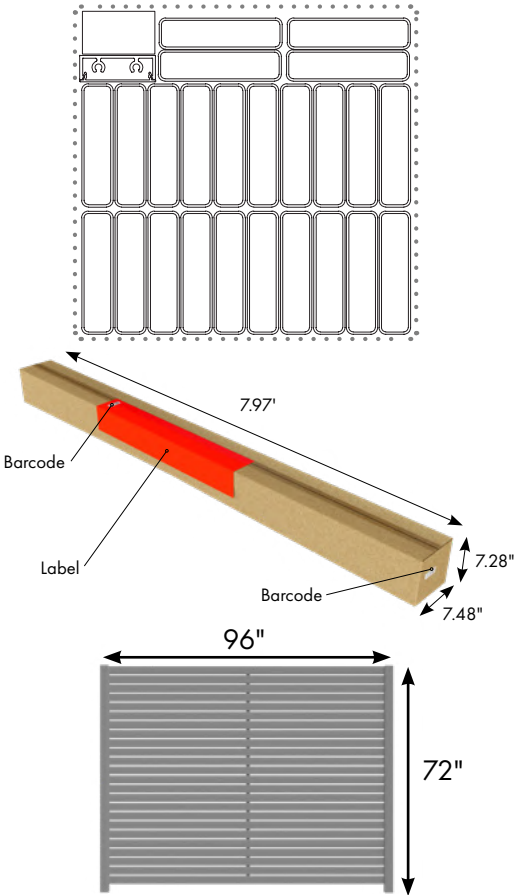



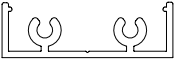

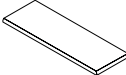
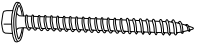
PROFILE	DESCRIPTION	LENGTH	QTY
	2.56" x .65" Slat	71"	2

SLAT PANEL HEIGHT	QTY REQUIRED QSP-SLAT-2PK (BASED ON 3/8" SPACING)
1' HIGH	2 - (11.4")
2' HIGH	4 - (23.1")
3' HIGH	6 - (34.85")
4' HIGH	8 - (46.5")
5' HIGH	10 - (58.3")
6' HIGH	12 - (70")
7' HIGH	14 - (81.75")
8' HIGH	16 - (93.5")

QUICK SCREEN™ SLAT - 96" BOXED 72" HIGH

ORDER CODE: QSP-2415SLAT-PK

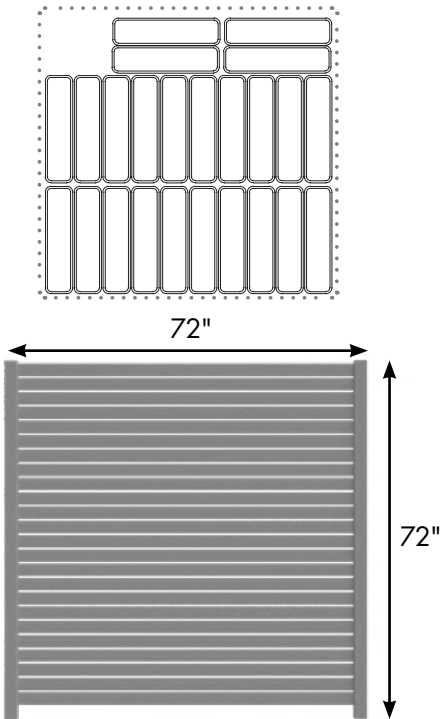


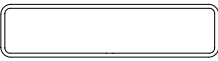
PROFILE	DESCRIPTION	LENGTH	QTY
	2.56" x .65" Slat	95"	24
	Center Support Rail	71"	1
	Center Support Rail Cover	71"	1
	Nylon Plastic Center Support Rail End Cap	1.58" x 0.5"	1
	Self Drilling Wafer Head Screws, Zinc Plated	#8 x 16mm	30pcs

PRODUCES A PANEL 96" WIDE x 71" HIGH (EXCLUDES POSTS)

QUICK SCREEN™ SLAT - 72" BOXED 72" HIGH

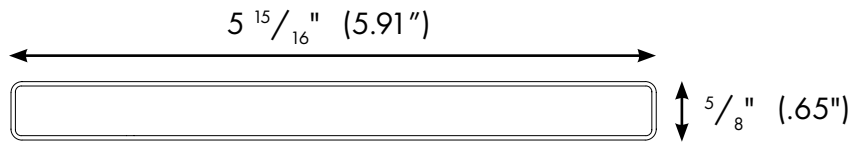
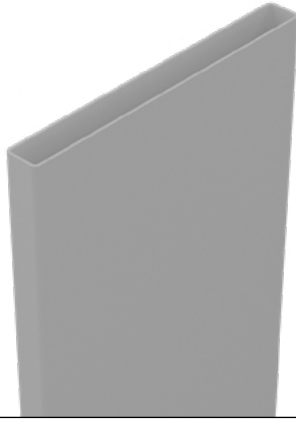
ORDER CODE: QSP-1800SLAT-PK



PROFILE	DESCRIPTION	LENGTH	QTY
	2.56" x .65" Slat	71"	24

72" WIDE x 72" HIGH (EXCLUDES POSTS)

QUICK SCREEN 6" SLAT




WALL THICKNESS: $\frac{1}{16}$ " (.06")
F*_{TU} - 262MPa (.08" wall)

QUICK SCREEN SLATS - 2 PACK

5.91" WIDE x 95" LONG

ORDER CODE: QSP-150-2415-SLAT

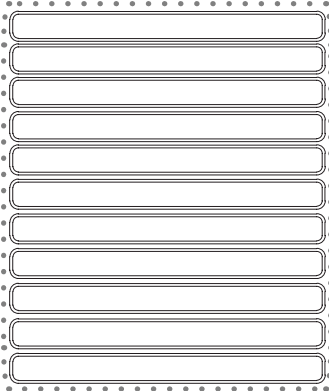


PROFILE	DESCRIPTION	LENGTH	QTY
	5.91" x .65" Slat	95"	1

QUICK SCREEN SLATS - 11 PACK

5.91" WIDE x 95" LONG

ORDER CODE: QSP-150-2415-SLAT-11PK




PROFILE	DESCRIPTION	LENGTH	QTY
	5.91" x .65" Slat	95"	11

QUICK SCREEN SLATS - 2 PACK

5.91" WIDE x 71" LONG

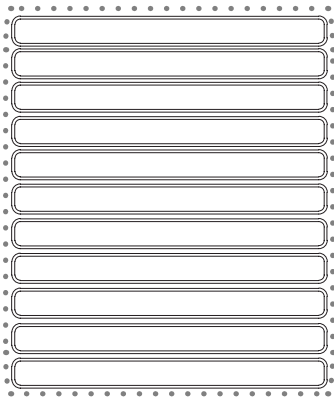
ORDER CODE: QSP-150-1800-SLAT



PROFILE	DESCRIPTION	LENGTH	QTY
	5.91" x .65" Slat	71"	1

QUICK SCREEN SLATS - 11 PACK

5.91" WIDE x 95" LONG ORDER CODE: QSP-150-1800-SLAT-11PK



PROFILE	DESCRIPTION	LENGTH	QTY
	5.91" x .65" Slat	71"	11

SLAT PANEL HEIGHT	QTY REQUIRED QSP-2415SLAT-2PK <small>(BASED ON 3/8" SPACING)</small>
1' HIGH	2 - (12.3")
2' HIGH	4 - (25.2")
3' HIGH	5 - (31.65")
4' HIGH	7 - (44.5")
5' HIGH	9 - (57.4")
6' HIGH	11 - (70.25")
7' HIGH	13 - (83.10")
8' HIGH	14 - (90")



1. 65MM POST WITH SIDE FRAME

1. QS-EP-B-2PK

Side frame end plate (2 per bag, 2 bags required per side frame pack)

2. QSP-2400-SF-2PK OR QSP-1800-SF-2PK

Quickscreen side frame 95" OR 71" long - 2 Pack (QTY 1 pack per panel)

3. QSP-65HD 2413 FP or QSP-65HD 2743 FP

Quickscreen 2.56" HD Full Post 95" or 108" Long

4. QSP-65HD-POSTEXT

Post Extender

5. Quickscreen 2.56" or 6" slat

(refer QTY required page 4 and 6)

6. XP-65TP-B

Post flat top plate (QTY 1/post)

7. XP-1800-135

135° Side Frame

8. QSP-SPACER-9-50PK

Quickscreen 3/8"

- QSP-SPACER-12.7-50PK

Quickscreen 1/2"

- QSP-SPACER-25.4"-50PK

Quickscreen 1"

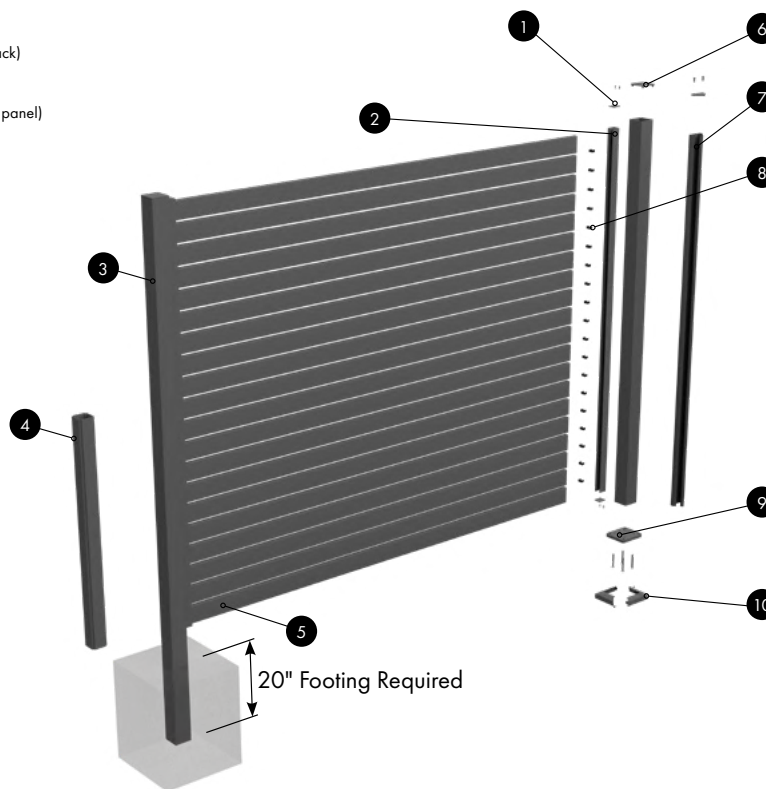
Aluminium snap in spacers, available in packs of 50.

9. XP-65BP-SET

4.5" x 4" Post Base Plate (w/screws)

10. XP-65DC-2P

Quickscreen 2PC Domical Cover



When is this install method good to use?

- When you have existing Pillars or posts to install fence between. Use between fence pillars or in patios & pergolas.
- Easiest install method when need to step the fence.
- When need fence panel higher than 6' high. Can make panel up to 95" high with combination of longer frame, full post, and post extension.
- Best system when you need the post to go 3' into the ground (frost line) for a fence 6' high. Also need post extension.
- When using the 135° adaptor to do a 45° corner.

2. NEW 4" SQUARE POST WITH HEAVY DUTY SIDE FRAME SYSTEM

AVAILABLE
1ST NOV

1. QS-EP-B-2PK

Side frame end plate (2 per bag, 2 bags required per side frame pack)

2. QSP-2400-SF-2PK OR QSP-1800-SF-2PK

Quickscreen side frame 95" OR 71" long - 2 Pack (QTY 1 pack per panel)

3. QSP-100HD-2413 FP OR QSP-100HD-2743 FP

4"x4" Square Post
95" & 108" long

4. Quickscreen 2.56" or 6" slat

(refer QTY required page 4 and 6)

5. QSP-100HD-DC

4" Square raised dome cap (press fit)

6. QSP-SPACER-9-50PK

Quickscreen 3/8"

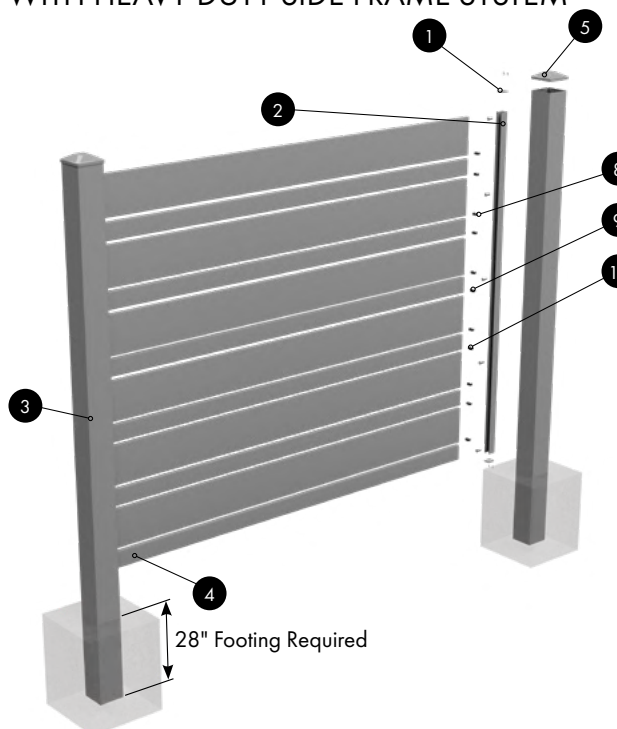
- QSP-SPACER-12.7-50PK

Quickscreen 1/2"

- QSP-SPACER-25.4"-50PK

Quickscreen 1"

Aluminium snap in spacers, available in packs of 50.



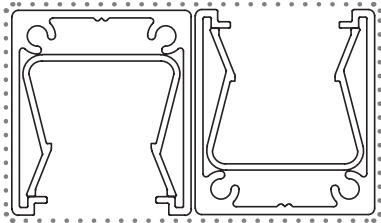
When is this install method good to use?

- This system has been specifically designed for area's where the fence needs to meet severe weather environments.
- Designed for fences that need to handle wind loads above 100 MPH.
- Has been designed to withstand Wind loads up to 170 MPH.
- Can also be used in all applications highlighted under standard side frame and post system

QUICK SCREEN™ 95" SIDE FRAME - 2 PACK

* FULL POST, POST CAP AND SLATS NOT INCLUDED

ORDER CODE: QSP-2400-SF-2PK



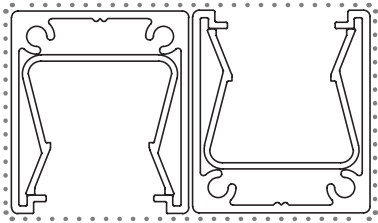
PROFILE	DESCRIPTION	LENGTH	QTY
	1.1" x 1.26" Side Frame	95"	2



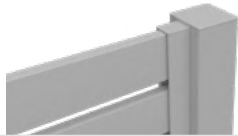
QUICK SCREEN™ 71" SIDE FRAME - 2 PACK

* FULL POST, POST CAP AND SLATS NOT INCLUDED

ORDER CODE: QSP-1800-SF-2PK



PROFILE	DESCRIPTION	LENGTH	QTY
	1.1" x 1.26" Side Frame	71"	2

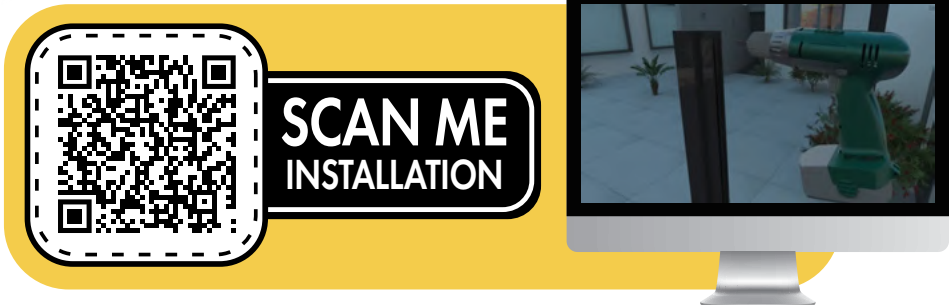


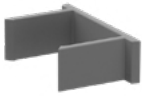
QUICK SCREEN™ SIDE FRAME CAP - 2 PACK

ORDER CODE: QSP-EP-2PK



PROFILE	DESCRIPTION	LENGTH	QTY
	QSP-EP-2PK	1.10" x 1.26"	2



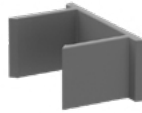


50 PACK

Spacer blocks $\frac{3}{8}$ " SPACERSOrder Code: **QSP-SPACER-9-50PK**

- Aluminum spacers
- Snaps into Quickscreen post
- Fast and easy install with post, slats and spacers

Powder coat colors —

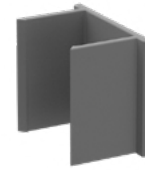


50 PACK

Spacer blocks $\frac{1}{2}$ " SPACERSOrder Code: **QSP-SPACER-12.7-50PK**

- Aluminum spacers
- Snaps into Quickscreen post
- Fast and easy install with post, slats and spacers

Powder coat colors —



50 PACK

Spacer blocks

1" SPACERS

Order Code: **QSP-SPACER-25.4-50PK**

- Aluminum spacers
- Snaps into Quickscreen post
- Fast and easy install with post, slats and spacers

Powder coat colors —

**Quickscreen Post / Side Frame infill spacer 95"**Order Code: **QS-SPACER-2413**

- Can use to modify post configuration
- Can be cut down for custom spacing or to fill gaps in on post.

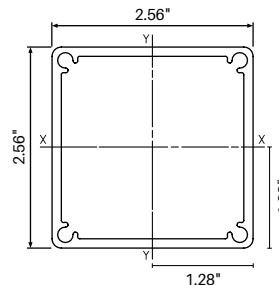
Powder coat colors —

 **$2\frac{9}{16}$ " x $2\frac{9}{16}$ " heavy duty post**

95" & 108" LONG

Order Code: **QSP-65HD 2413/2743 FP**

Use with side frame.

Need to order: **XP-65-TP** post cap.

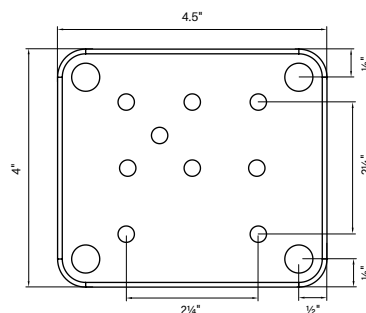
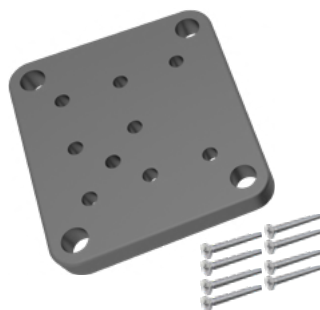
Powder coat colors —

**TECH SPECS**

- PP 255 / AP 255
- $2\frac{9}{16}$ " x $2\frac{9}{16}$ " larger profile, heavy duty post
- 0.125" wall thickness
- Screw flutes to screw on base plate if required
- Aluminum powder coated press-in top plate included with 8 foot posts
- $b_x = 464.62 \times 10E3 \text{ mmE4}$
- $b_y = 464.62 \times 10E3 \text{ mmE4}$

4x screw flutes in post allow tight fit of press in flat aluminum top plate.

Optional base plate can be attached using screw flutes for base plated post installations.

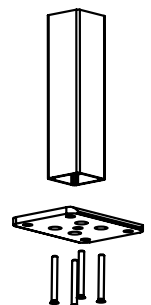
**2.56"x2.56" post base plate set**

1x base plate & screws

POWDER COATED Aluminum

Order Code: **XP-65BP-SET**

- 4.53"x4" base plate (.5" thick) with fixing holes
- Simply screw base plate into post screw flutes
- 12G CSK screws (SS304) included in set

IMPORTANT: MUST LUBRICATE SCREWS BEFORE FIXING

Powder coat colors —



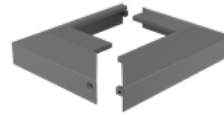


2.56"x2.56" post flat top plate POWDER COATED ALUMINUM

Order Code: **XP-65-TP**

- Alloy ADC12 aluminum plate - .12" thick
- Press into post screw flutes for secure fixing
- 8 foot posts come with free top plate included
- only purchases if extra top plates are required.

Powder coat colors —



Two part domical cover POWDER COATED ALUMINIUM

Order Code: **XP-65-DC-2P**

- Suits 2.56"x2.56" post with base plate
- 4.8"x4.17" outer - 2.64" x 2.64" inner
- Alloy ADC12
- Cover can be fitted to posts after fence is installed.

Powder coat colors —



AVAILABLE
1ST NOV



4" x 4" post POWDER COATED ALUMINUM

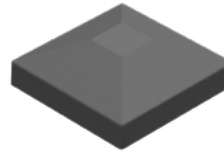
Order Code: **QSP-100HD-2413/2743 FP**

- Structurally engineered heavy duty post - .16" thick
- Designed to handle wind loads up to 170mph
- 95" and 108" long
- Domed top cap sold separately

Powder coat colors —



AVAILABLE
1ST NOV



4" x 4" Domed Cap POWDER COATED ALUMINIUM

Order Code: **QSP-100-TC**

- Suits 4"x4" post
- Cover can be fitted to posts after fence is installed.

Powder coat colors —

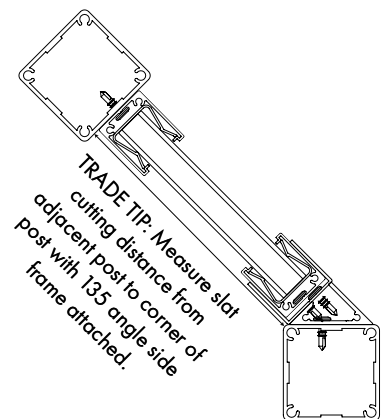
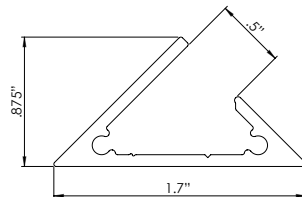


Quickscreen 135° Angle Adapter

POWDER COATED Aluminum

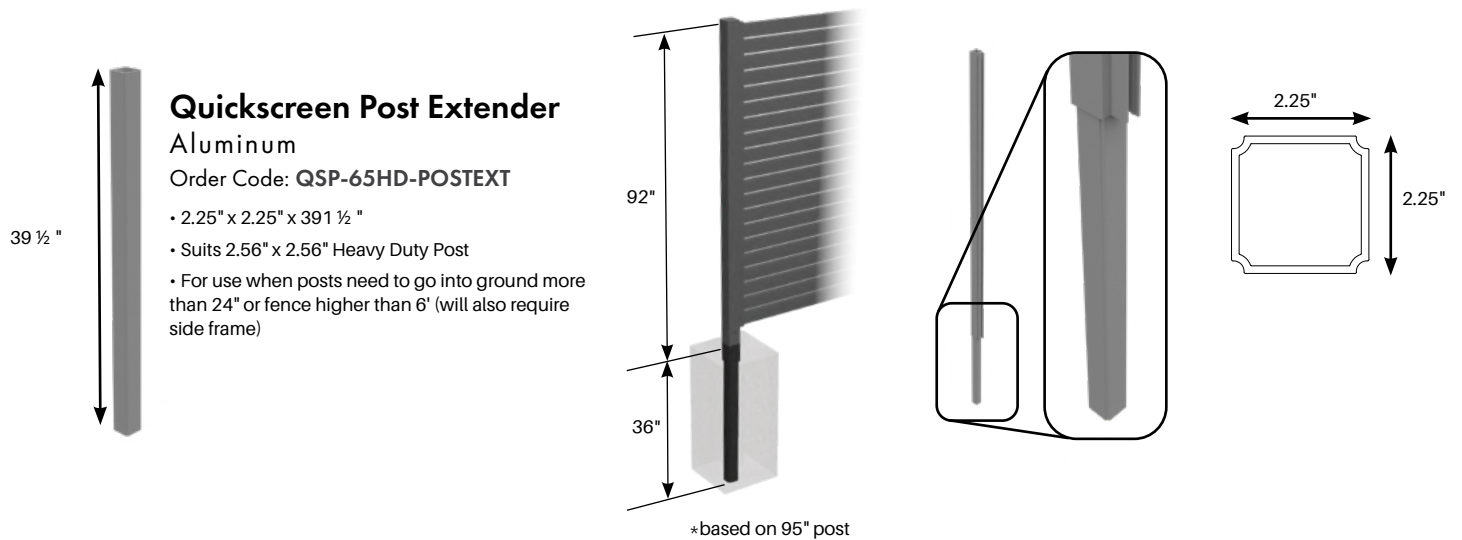
Order Code: **XP-1800-135**

- 71" long
- PP 109/ AP 163, Alloy 6060 T5
- Simple 2 step process: (1) Adapter fixes to post/wall
- (2) Quickscreen side frame then attaches to adapter into which slats insert
- Ideal for when screens to run at 135 degree angle from post or wall



Powder coat colors —





3. NEW 3 WAY POST SYSTEM

1. QS-3WTP
Post flat top plate (QTY 1/post)

2. QSP-65HD 2413 3WAY
Quickscreen 3 Way Post
95" Long

3. QSP-SPACER-9-50PK
Quickscreen 3/8"

- QSP-SPACER-12.7-50PK
Quickscreen 1/2"

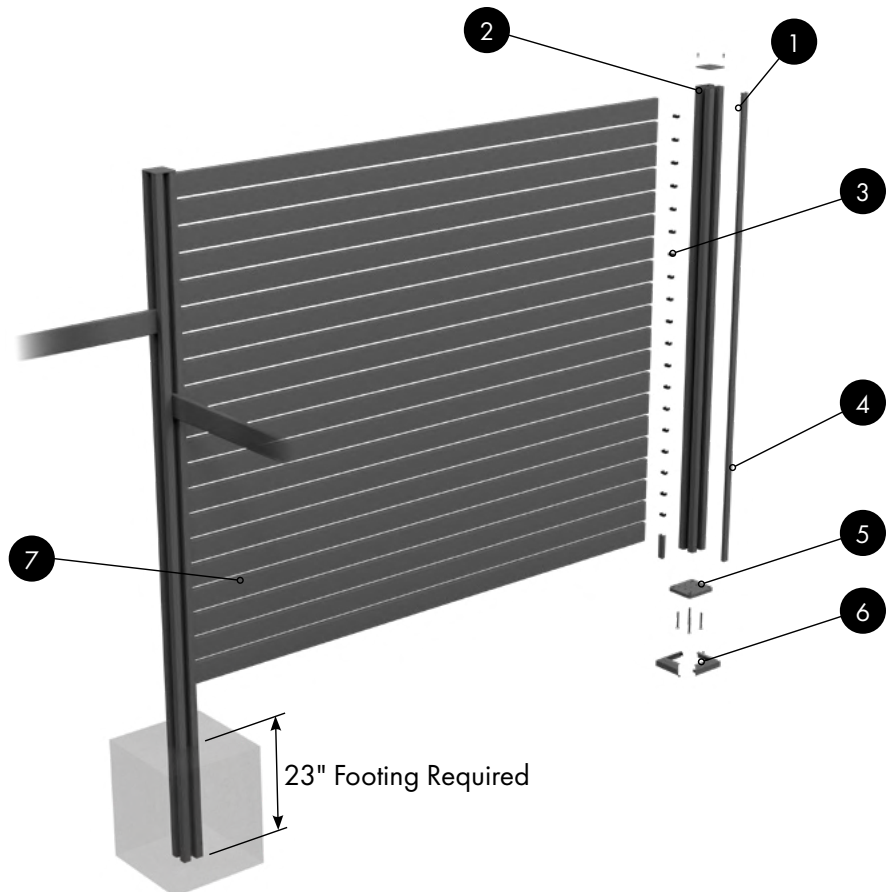
- QSP-SPACER-25.4"-50PK
Quickscreen 1"

4. QS-SPACER-2413
Snap in spacer/infill (23" spacer comes with all posts as starting spacer)
95" length required for 1 way- start/end post and gate posts

5. QS-3WBP-SET
4.5" x 4" Post Base Plate (w/screws)

6. XP-65DC-2P
Quickscreen 2PC Domical Cover

7. Quickscreen 2.56" or 6" slat
(refer QTY required page 4 and 7)



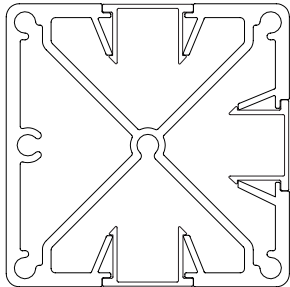
One post for corners, inline and ends as well as gate posts. (Need to also order QS-spacer-2413 for gate and end posts)

When is this install method good to use?

- Suitable install method for most fence application as premium finish and cost effective. Slats go into the post.

QUICK SCREEN™ 3 WAY POST

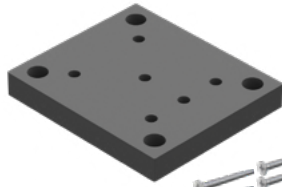
ORDER CODE: QSP-65HD-2413-3WAY



PROFILE	DESCRIPTION	LENGTH	QTY
	2.56" x 2.56" 3 Way Post	95"	1
	Post Insert	24"	2
	Post Insert	95"	1

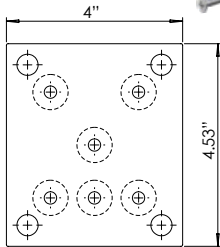
Powder coat colors —





3 way post base plate set
1x base plate & screws
POWDER COATED ALUMINUM
Order Code: **QS-3WBP-SET**

- 4.53"x4" base plate (.5" thick) with fixing holes
- Simply screw base plate into post screw flutes
- 14G Hex head zinc flake screws (QTY 6) included in set



Powder coat colors —

B

G

W

3 Way Post Flat Top Plate
POWDER COATED ALUMINUM

Order Code: **QS-3WTP**

- Alloy ADC12 aluminum plate .12" thick
- 2 x 14G screws included



Powder coat colors —

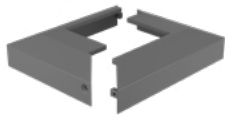
B

G

W

Two part domical cover
POWDER COATED ALUMINIUM
Order Code: **XP-65-DC-2P**

- Suits 2.56"x2.56" post with base plate
- 4.8"x4.17" outer - 2.64" x 2.64" inner
- Alloy ADC12
- Cover can be fitted to posts after fence is installed.

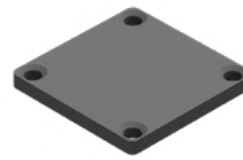


Powder coat colors —

B

G

W



3 Way Post Flat Top Plate
UV Stabilised Acrylic
Order Code: **QSP-3WTP-B**

- .24" wall thickness
- 4 x 14G screws included



Powder coat colors —

B



50 PACK
Spacer blocks
 $\frac{3}{8}$ " SPACERS
Order Code: **QSP-SPACER-9-50PK**

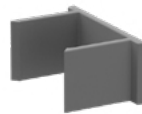
- Aluminum spacers
- Snaps into Quickscreen post
- Fast and easy install with post, slats and spacers

Powder coat colors —

B

G

W



50 PACK
Spacer blocks
 $\frac{1}{2}$ " SPACERS
Order Code: **QSP-SPACER-12.7-50PK**

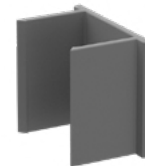
- Aluminum spacers
- Snaps into Quickscreen post
- Fast and easy install with post, slats and spacers

Powder coat colors —

B

G

W



50 PACK
Spacer blocks
1" SPACERS
Order Code: **QSP-SPACER-25.4-50PK**

- Aluminum spacers
- Snaps into Quickscreen post
- Fast and easy install with post, slats and spacers

Powder coat colors —

B

G

W



Quickscreen Post / Side Frame infill spacer 95"

Order Code: **QS-SPACER-2413**

- Can use to modify post configuration
- Can be cut down for custom spacing or to fill gaps in on post.

Powder coat colors —

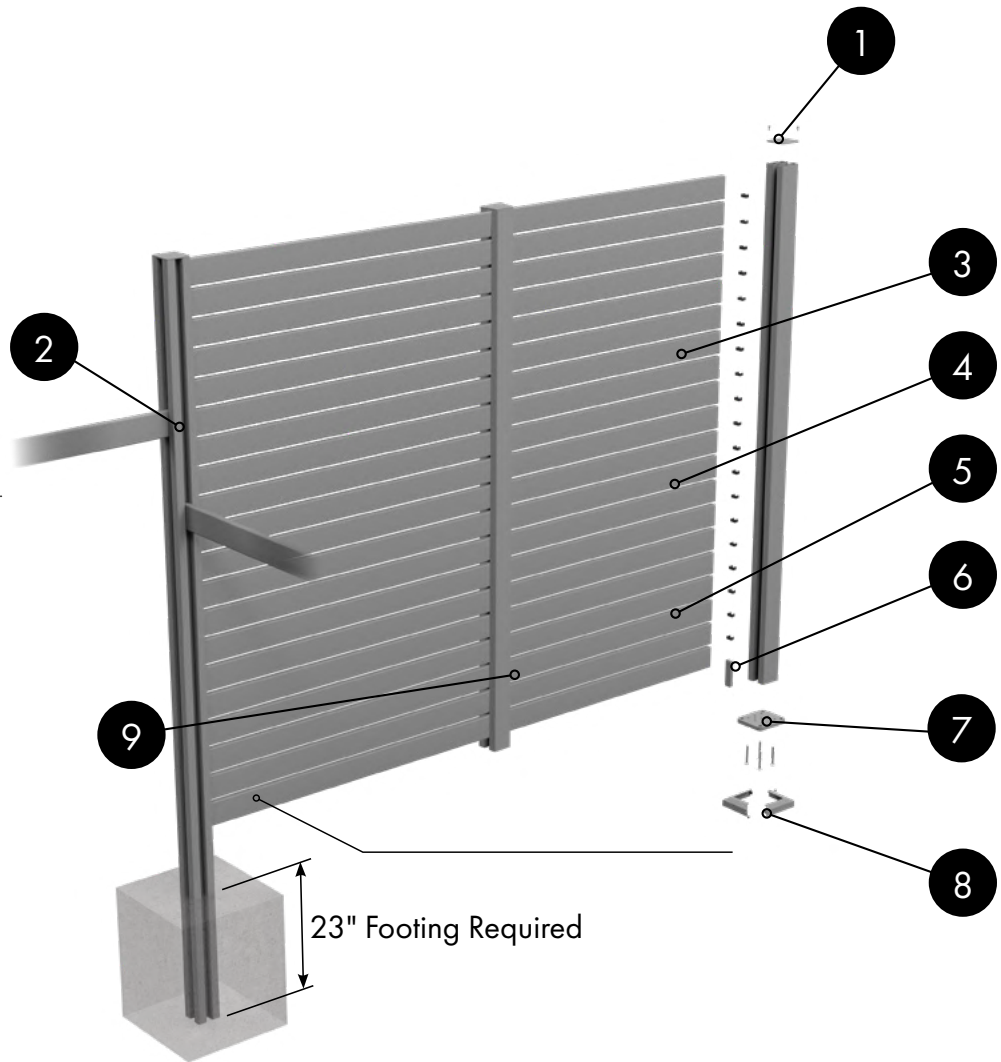
B

G

W

4. 1 WAY, 2 WAY, CORNER POST

1. QS-3WTP
Post flat top plate (QTY 1/post)
2. 1 WAY, 2 WAY OR CORNER POST
QSP-65HD-2413-1WAY/2WAY/CNR-T
95" Long
3. QSP-SPACER-9-50PK
Quickscreen 3/8"
4. QSP-SPACER-12.7-50PK
Quickscreen 1/2"
5. QSP-SPACER-25.4"-50PK
Quickscreen 1"
Aluminium snap in spacers, available in packs of 50.
6. QS-SPACER-2413
Snap in spacer/infill
7. XP-65BP-SET
4.5" x 4" Post Base Plate (w/screws)
8. XP-65DC-2P
Quickscreen 2PC Domical Cover
9. Quickscreen 2.56" or 6" slat
(refer QTY required page ???)



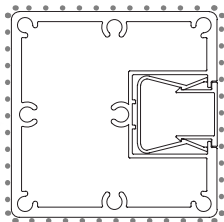
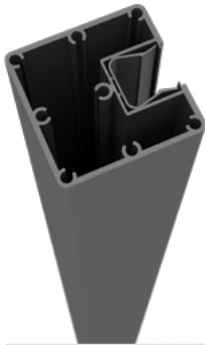
One way post for starting and finishing of fence runs as well as gate post (need QS-SPACER-2413 for gate post affixed to wall) Two way post for inline straight runs and corner post for 90 degree fence returns corner post can also be used at T junction.

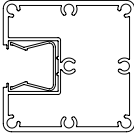

When is this install method good to use?

- Suitable install method for most fence application as premium finish and cost effective. Slats go into the post.

QUICK SCREEN POSTS - 1 WAY POSTS BOXED

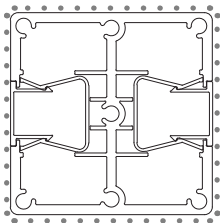
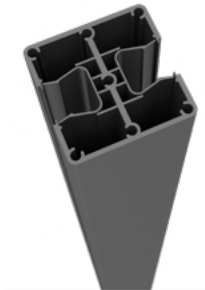
ORDER CODE: QSP-65HD-2413-1WAY

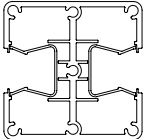
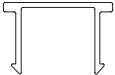


PROFILE	DESCRIPTION	LENGTH	QTY
	2.56" x 2.56" 1 Way Post	95"	1
	Post Insert	24"	1

QUICK SCREEN POSTS - 2 WAY POSTS BOXED

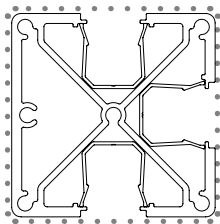
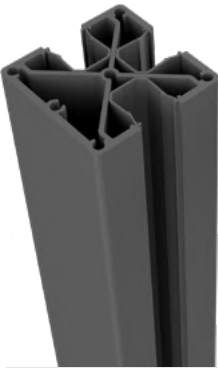
ORDER CODE: QSP-65HD-2413-2WAY

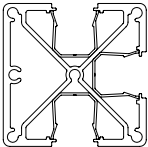




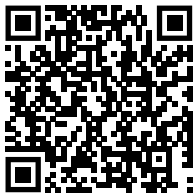
PROFILE	DESCRIPTION	LENGTH	QTY
	2.56" x 2.56" 2 Way Post	95"	1
	Post Insert	24"	2

QUICK SCREEN™ POSTS - CORNER T POSTS BOXED

ORDER CODE: QSP-65HD-2413-CNR-T



PROFILE	DESCRIPTION	LENGTH	QTY
	2.56" x 2.56" Corner T Post	95"	1
	Post Insert	24"	2
	Post Insert	95"	1



SCAN ME
INSTALLATION



Images & drawings are not to scale



Post flat top plate
POWDER COATED ALUMINUM
Order Code: **XP-65-TP**
• Alloy ADC12 aluminum plate - .12" thick
• Press into post screw flutes for secure fixing

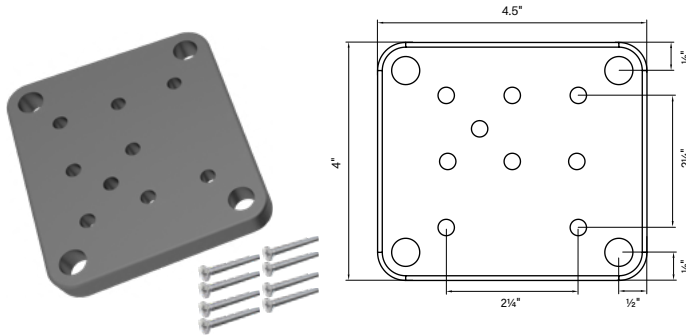
Powder coat colors —



1 way / 2 way post flat top plate
POWDER COATED Aluminum
Order Code: **QS-TP**

- Alloy ADC12 aluminum plate - 3mm thick
- 8 foot posts come with free top plate included - only purchase if extra top plates are required

Powder coat colors —



Post base plate set (suits full post, 1 way, 2 way and corner post)
1x base plate & screws

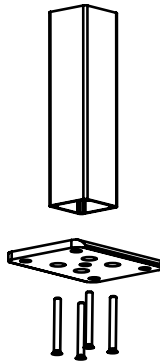
POWDER COATED Aluminum

Order Code: **XP-65BP-SET**

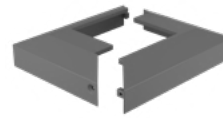
- 4.53"x4" base plate (.5" thick) with fixing holes
- Simply screw base plate into post screw flutes
- 12G CSK screws (SS304) included in set

IMPORTANT: MUST LUBRICATE SCREWS BEFORE FIXING

Powder coat colors —



Two part domical cover
POWDER COATED Aluminum
Order Code: **XP-65-DC-2P**



- Suits 2.56"x2.56" post with base plate
- 4.8"x4.17" outer - 2.64" x 2.64" inner
- Alloy ADC12
- Cover can be fitted to posts after fence is installed.

Powder coat colors —

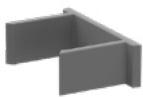


Quickscreen Post / Side Frame infill spacer 95"

Order Code: **QS-SPACER-2413**

- Can use to modify post configuration
- Can be cut down for custom spacing or to fill gaps in on post.

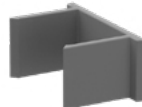
Powder coat colors —



50 PACK
Spacer blocks
3/8" SPACERS
Order Code: **QSP-SPACER-9-50PK**

- Aluminum spacers
- Snaps into Quickscreen post
- Fast and easy install with post, slats and spacers

Powder coat colors —



50 PACK
Spacer blocks
1/2" SPACERS
Order Code: **QSP-SPACER-12.7-50PK**

- Aluminum spacers
- Snaps into Quickscreen post
- Fast and easy install with post, slats and spacers

Powder coat colors —



50 PACK
Spacer blocks
1" SPACERS
Order Code: **QSP-SPACER-25.4-50PK**

- Aluminum spacers
- Snaps into Quickscreen post
- Fast and easy install with post, slats and spacers

Powder coat colors —



ACCESSORIES & ADDITIONAL INSTALL OPTIONS



**2 PART Center
SUPPORT RAIL**

Insert side frames and infill
before center support rail

Center support rail

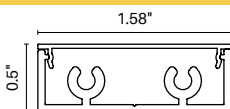
71" LONG

Order Code: XP-1800-CSR

OPTIONAL EXTRA

Commonly used for screens 6' or wider to
provide strength & rigidity to panel

Snap-on cover hides fixings - provides slimline
sturdy support rail with no visible fixings



Powder coat colors —

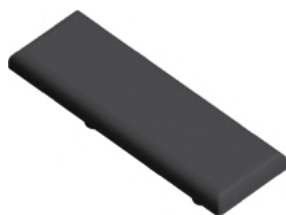
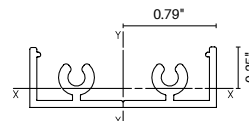
B

G

W

TECH SPECS

- PP 126 / AP 188
- Alloy 6063-T5
- Screw fix center support rail to each slat
- Includes 2x screw flutes for press-in top cap
- Top cap sold separately
- bxx = 1.73 x 10E3 mmE4
- lyy = 26.34 x 10E3 mmE4

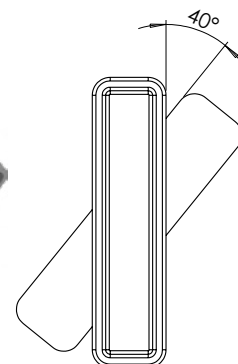
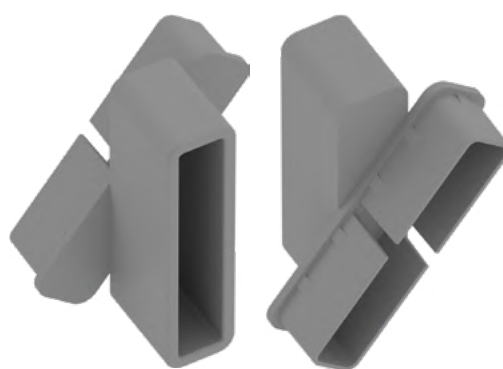


Center Support Rail Cap

3MM THICK

Order Code: XP-CSRC-B

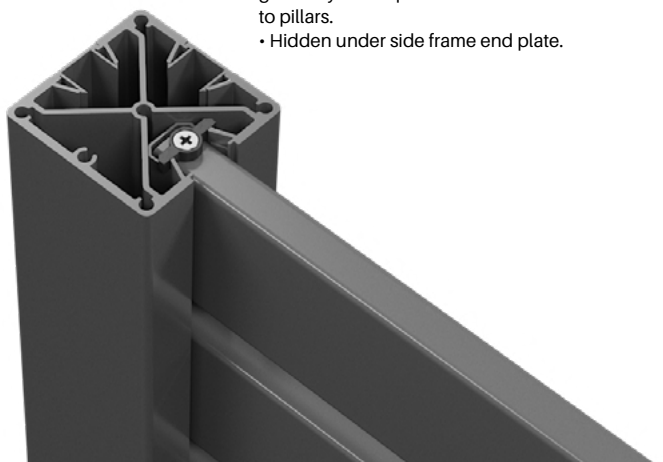
- Black nylon cap
- Simply press into screw flutes in center support rail
- Easy and fast fitting of cap



10 PACK Slat locking clip

Order Code: XPL-SLATCLIP-10PK

- Aluminium cast locking clip with SS304 self tapping screws
- Optional extra for install. Acts as a mechanical fix to prevent chance of side frames splaying open. Consider if installing side frames to timber posts which may move/twist OR if side frames installed onto aluminum posts for large fence runs - generally not required for side frame installs to pillars.
- Hidden under side frame end plate.



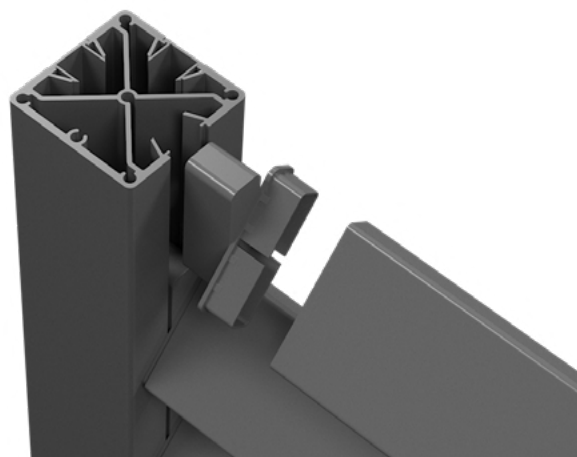
Louvre brackets

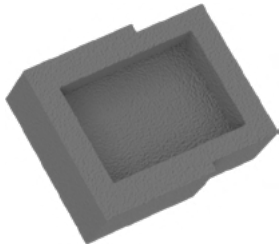
1 x LEFT & 1 x RIGHT

Order Code: QS-LB

- 1 x left and 1 x right bracket per pack.
- Die cast aluminum
- Suits 2.56" x .65" slat - Press brackets onto end of slat then insert bracket into side frame
- Cost effective and fast way to achieve a fixed louvre finish

40° FINAL SLAT ANGLE





50 PACK
Spacer blocks
0.35" SPACERS

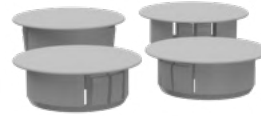
Order Code: QSP-SB09-50PK

- UV stabilised ASA thermoplastic - black
- Snaps into Quickscreen post
- Fast and easy install with post, slats and spacers



4 PACK
Black or White finish

Order Code: SS-POSTPLUG-4PK
SS-POSTPLUG-4PK-W



- 1.25"mm outer top suits .98" hole
- Suits post wall thickness .125"
- Cap holes in posts when fixing posts to structures



QUICK SCREEN™ HORIZONTAL GATES



PEDESTRIAN GATE



PEDESTRIAN GATE
FULL PRIVACY



HEAVY DUTY GATE



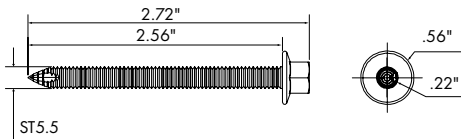
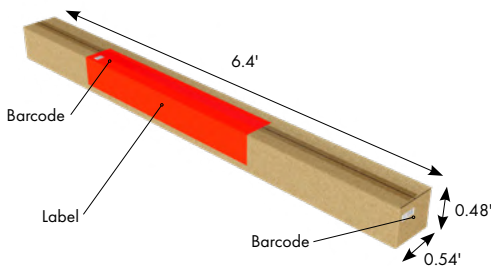
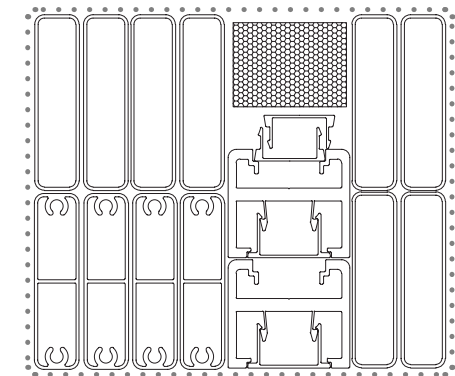
HEAVY DUTY GATE
FULL PRIVACY



HEAVY DUTY GATE
COMBO SLAT

QUICK SCREEN GATE - BOXED

ORDER CODE: QS-GATE



PROFILE	DESCRIPTION	LENGTH	QTY
	1.77" x 1.58" Gate Frame	71"	2
	Punched Insert	71"	2
	Gate Cover Insert	71"	2
	Gate Slat (Screw Flutes)	38"	4
	2.56" x 0.65" Slat	38"	20
	Plastic Gate Cap		2
	Steel Screws (Zinc Flake Coating)	ST .22" X 2.56"	16

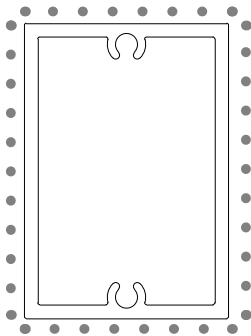


Powder coat colors —



QUICK SCREEN™ ADJUSTABLE PRIVACY GATE

ORDER CODE: QSP-ADJPR-GATE-KIT



PROFILE	DESCRIPTION	LENGTH	QTY
	QSP-2415-6545HD	95"	1

- Use with QS-GATE to adjust spacing or create full privacy
- Can also use with QS-GATE to create wider gates
- Additional slats may be also be required depending on use.

Powder coat colors —



Gate Slat
Order Code: **QS-2415-GB65**

- 95" long
- PP 126 / AP 188
- Used to brace gates for additional strength



Powder coat colors —

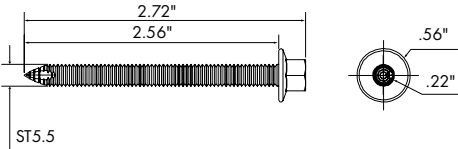
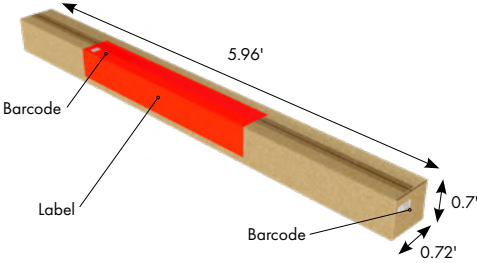
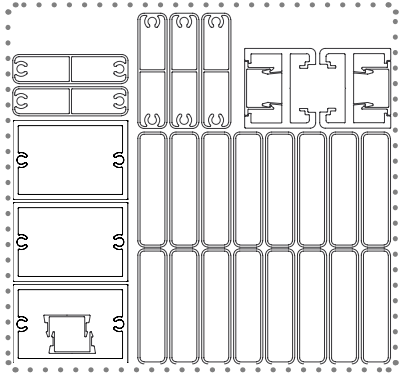


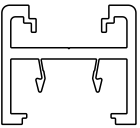
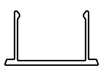
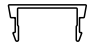

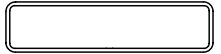
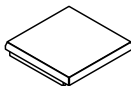
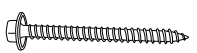
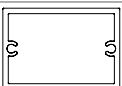
Images & drawings are not to scale



QUICK SCREEN™ DRIVEWAY GATE - BOXED

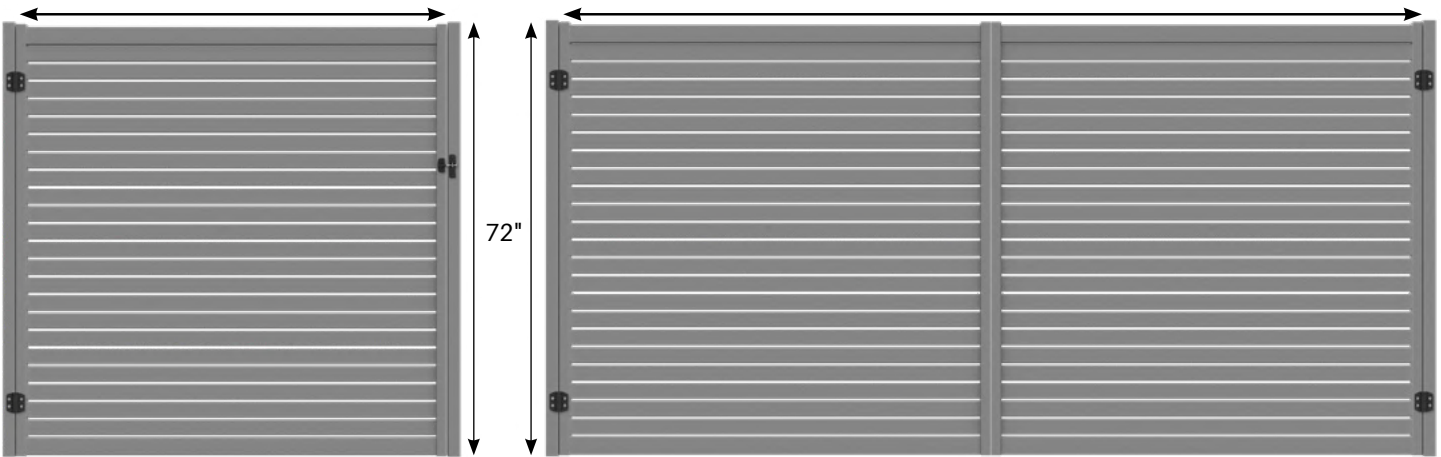
ORDER CODE: QS-GATE-1800



PROFILE	DESCRIPTION	LENGTH	QTY
	1.77" x 1.58" Gate Frame	71"	2
	Punched Insert	71"	2
	Gate Cover Insert	71"	2
	Gate Slat (Screw Flutes)	69 ½"	5
	2.56" x 0.65" Slat	69 ½"	16
	Plastic Gate Cap		2
	Steel Screws (Zinc Flake Coating)	ST .22" X 2.56"	32
	Gate Rail	67 ½"	3

71 ⅓" - 73 ½" (includes gate hardware variation)

142" - 146" (includes gate hardware variation)



Powder coat colors —





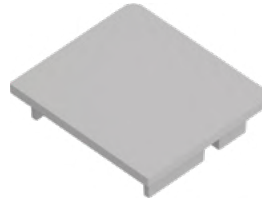
PACK OF 16

Gate frame screws

12Gx2.56" HEX FLANGE HEAD

Order Code: **XP-SCREWSGF-16PK**

- Use to secure gate slats to gate side frame
- Hex flange head for easy assembly



Gate frame cap

NYLON

Black

Order Code: **XP-GFC**

- UV stabilised nylon - 0.12" thick cap
- Available in 5 colors
- Suits gate side frame
- Press-in flat cap

Powder coat colors —

B



Nylon packer

USE WITH D&D

LOKK LATCH DELUXE

Order Code: **XP-PACKER**

- UV stabilised nylon
- Must be used when installing a D&D Lokk Latch Deluxe
- Packer aligns Lokk Latch Deluxe with gate side frame
- Affixes to inner face of gate side frame positioned under Lokk Latch striker

NEW HEAVY DUTY GATE FRAME SYSTEM

1. QSP-HDGFC-2PK

Quickscreen Heavy Duty Gate Frame Cap (2 pack)

2. QSP-HDGATE-1804/2413-FR

Quickscreen Heavy Duty Gate Frame
71" or 95" Long

3. QSP-SPACER-9-50PK

Quickscreen 3/8"

- QSP-SPACER-12.7-50PK

Quickscreen 1/2"

- QSP-SPACER-25.4"-50PK

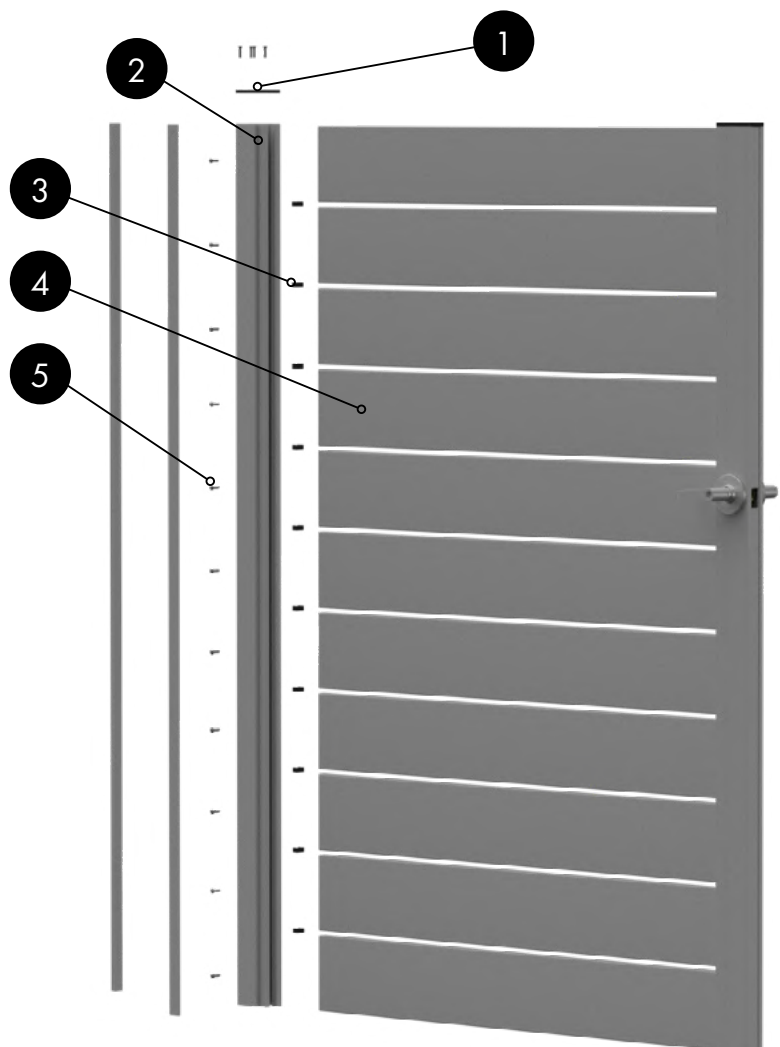
Quickscreen 1"

Aluminium snap in spacers, available in packs of 50.

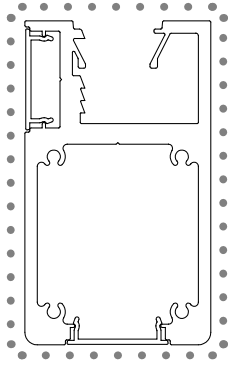
4. Quickscreen 2.56" or 6" slat

5. QSP-HDGF-SCREWS-50PK

Self Drilling Screw wafer #10-24x3/4" Zinc Flake



QUICK SCREEN HEAVY DUTY GATE FRAME

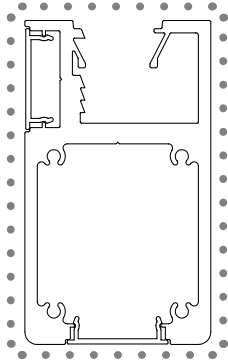


Heavy Duty Gate Frame

71" long

Order Code: **QSP-HDGATE-1804-FR**

- PP 534 / AP534
- .125" wall thickness with .2" center web
- .125" radius corners



Heavy Duty Gate Frame

95" long

Order Code: **QSP-HDGATE-2413-FR**

- PP 534 / AP534
- .125" wall thickness with .2" center web
- .125" radius corners



Heavy duty gate frame cap (2 pack)

Black Acrylic

Order Code: **QSP-HDGF-2PK**

- Includes 8 x screws



Self drilling screw wafer

#10 x 3/4"

Zinc Flake

Order Code: **QSP-HDGFSCREW-50PK**



50 PACK

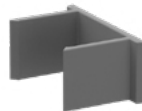
Spacer blocks

3/8" SPACERS

Order Code: **QSP-SPACER-9-50PK**

- Aluminum spacers
- Snaps into Quickscreen post
- Fast and easy install with post, slats and spacers

Powder coat colors —



50 PACK

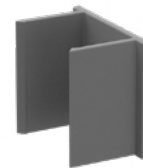
Spacer blocks

1/2" SPACERS

Order Code: **QSP-SPACER-12.7-50PK**

- Aluminum spacers
- Snaps into Quickscreen post
- Fast and easy install with post, slats and spacers

Powder coat colors —



50 PACK

Spacer blocks

1" SPACERS

Order Code: **QSP-SPACER-25.4-50PK**

- Aluminum spacers
- Snaps into Quickscreen post
- Fast and easy install with post, slats and spacers

Powder coat colors —



GATE HARDWARE & ACCESSORIES

0.75"
gap spacing

1
alignment leg



One alignment leg on hinge allows for quick and sturdy fixing on one side with flexible positioning on the other side

TRUClose® HEAVY DUTY

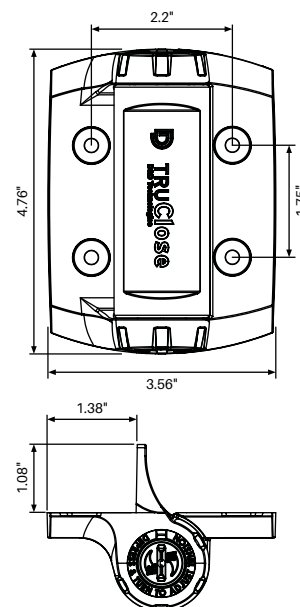
TruClose® hinge pair Heavy duty

1 ALIGNMENT LEG

D&D code: TCHD1A53BT

Order Code: TC-H-AT-HD-B

- D&D patented tension adjustment
- Strong, moulded polymer and stainless steel
- Adjust tension from both ends of the hinge
- No visible fixings
- Decorative trim covers available in black finish
- Super strong engineering polymers and stainless steel components
- Won't rust, bind, sag or stain
- Limited lifetime warranty
- Pool fencing compliant - Rated for **gates up to 150lbs**



0.59" - 1.57"
gap spacing

KEYED TO DIFFER



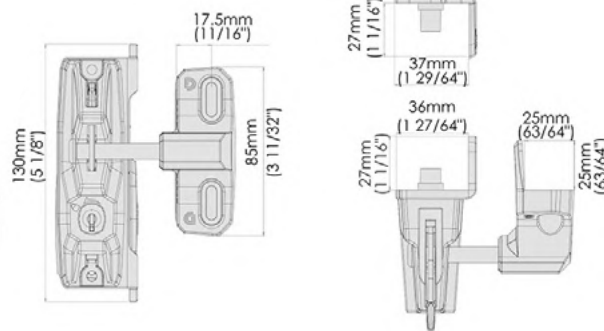
LOKKLatch® DELUXE

Lokk Latch® deluxe

D&D code: LL3PWA

Order Code: LL-DL

- Lockable from both sides of gate
- Locks are keyed to alike
- Rekeyable, 6-pin security lock
- Fits up to 6" deep posts
- Black polymer



D&D Gate Stop Black Polymer Finish

Order Code: SS-GS

- Ideal gate alignment device
- Prevents damage to latches & hinges
- Great reduces gate slam noise
- Tough, durable polymer + rubber bumper



D&D Padlockable Drop Bolt Black Finish

Order Code: QB124

- Powder coated black, stainless steel drop-bolt
- Padlockable (*Padlock not included)
- Tough, moulded polymer mounting system



**SCAN ME
INSTALLATION**



65 SERIES QUICK SCREEN™ LOCK BOX

QSP-HDGATE-SET



Lever/knob lockbox ALUMINUM

Order Code: **XP-LBOX-LSET**

- Patented non-weld lockbox
- Suits horizontal slat gates with 2.56" x .65" slats
- Must use with gate kits (XP-GKIT-LSET09/20)
- Screw fix assembly of pre-powder coated lockbox and extrusion
- Suits knob or lever sets (Stanley or Lockwood models)



Stanley round knob set STAINLESS STEEL

Order Code: **XP-HDL-KNOB**

- Kob set keyed both sides
- Lock/unlock both sides
- Suits left or right gate opening
- Stainless steel knob and rose
- C4 6 pin restricted compatible (inside & outside)



Stanley lever set STAINLESS STEEL

Order Code: **XP-HDL-LEVER**

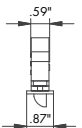
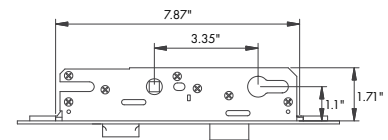
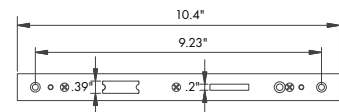
- Kob set keyed both sides
- Lock/unlock both sides
- Suits left or right gate opening
- Stainless steel knob and rose
- C4 6 pin restricted compatible (inside & outside)



Mortise Lock - Heavy Duty Gate

Order Code: **QS-MORT-LOCK**

- Slimline mortise lock kit includes 2 x lever handles, face plate, lock mechanism, striker and 2 keys.
- Lock suits Quickscreen Heavy Duty Gate Frame.
- Dual locking mechanism with deadlock.
- Keyed both sides and lock / unlock both sides.
- Allow 3/8" gap between gate stile & latch post.



Images & drawings are not to scale

QUICK SCREEN™

**The leading slat
fencing system**

**Designed &
manufactured by
Aluminum Outlet**

**Save time
& money**

Quickscreen™ Vertical slat system caters to more Traditional Style Architecture with a Modern twist. By the usage of our patented friction fit technology in the rails it provides a quick and easy assembly that can adjust to meet your customer's personal requirements. We offer both a slimline and recently added Heavy duty top and bottom rail to provide an array of vertical slat fencing and gate designs. We have an array of spacing options between vertical slats to provide privacy and airflow. You can easily adjust the spacing to full privacy or wider custom spacing to provide a more traditional ranch-style picket design. Our slimline vertical framing system can also be used to create Paling and federation picket fencing designs. A comprehensive vertical slat fencing offering.

- Quickscreen Vertical slat features and benefits
- Unique patented friction assembly, eliminating the need to use fixings to secure off the slats (quick assembly)
- Modular system which is easily width and height adjustable. Simply cut to suit opening.
- Array of designs to meet most applications or looks.
- Proven system with over 15 years supplying to the market.
- Product engineered to meet all types of weather conditions.
- System provides privacy whilst still allowing airflow between slats.
- Complete system including gates and modular sliding gates options.
- Limited lifetime warranty

Why Quickscreen?

Due to our extensive experience with horizontal slat fencing we have perfected the system to provide you a slat system that is:

- Trial and tested to meet all types of applications and weather conditions.
- Very easy to assemble and install.
- Most importantly the business model has been perfected providing you with a product with very healthy margins and return.

Call us for more information on our Reseller and Distributor business models.

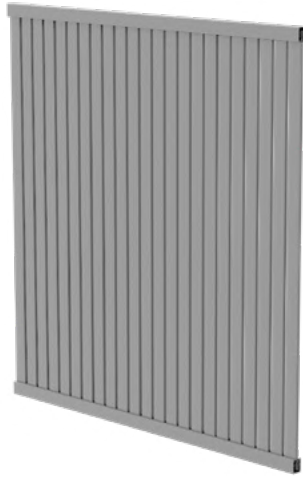
HIGHEST QUALITY FINISHES

Our range of genuine AAMA 2603 powder coat finishes has been carefully selected to include the most sought after colors on offer.

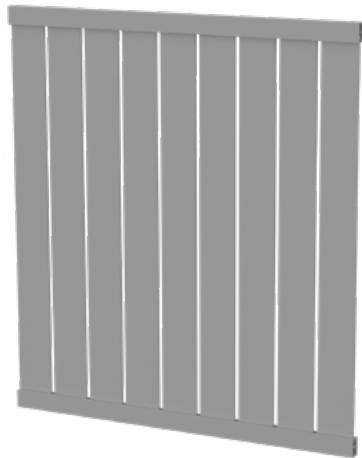
All components are suitably pre-treated prior to powder coating and are applied by fully accredited coating facilities.



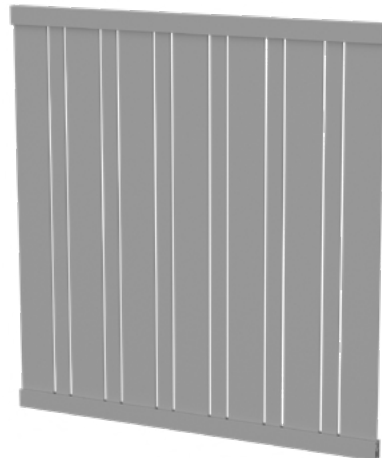
QUICK SCREEN™ VERTICAL SLATS



SLIMLINE VERTICAL 65 SERIES



HEAVY DUTY VERTICAL
150 SERIES



HEAVY DUTY VERTICAL 65
& 150 SERIES COMBO

PALING FENCING

NO WELDING REQUIRED



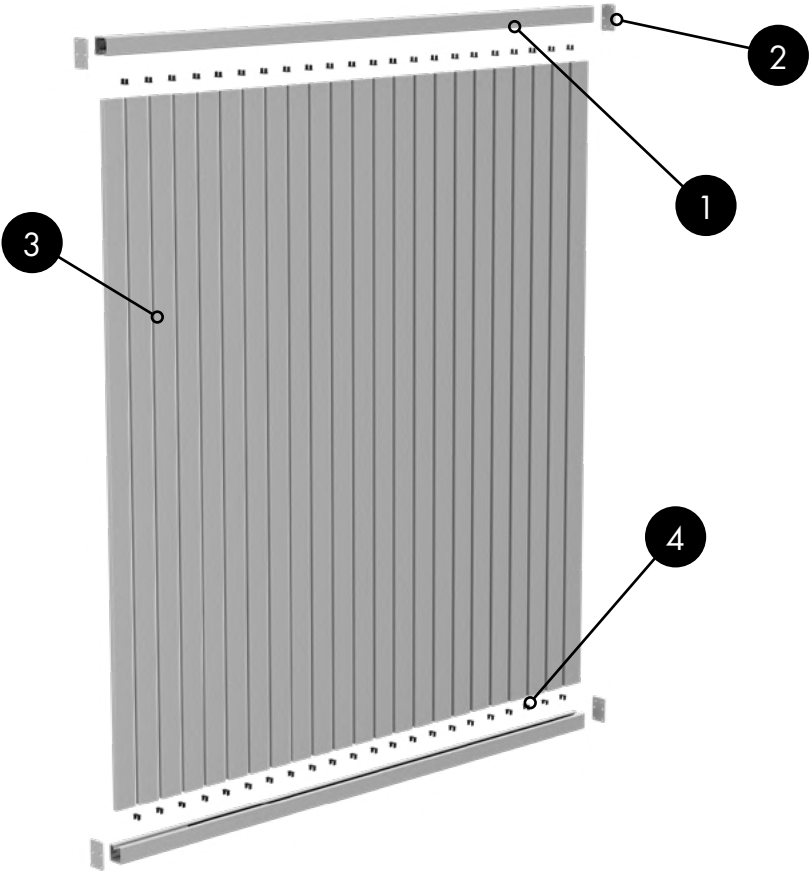
FEDERATION/PICKET FENCING

NO WELDING REQUIRED



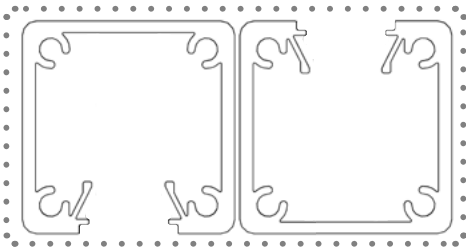
SLIMLINE VERTICAL SERIES

- 1. Quickscreen Vertical Top & Bottom rail 2pk
- 2. Quickscreen Vertical Top & Bottom rail bracket set - 4 pack
- 3. 2.56" slat or 6" slat
- 4. Quickscreen $\frac{3}{8}$ " $\frac{1}{2}$ " and 1" Aluminum snap in spacers available in 50 packs



QUICK SCREEN™ VERTICAL TOP & BOTTOM RAIL

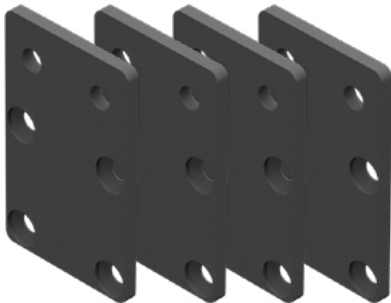
ORDER CODE: QSP-VERT-RAIL-1777-2PK



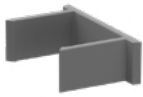
PROFILE	DESCRIPTION	LENGTH	QTY
	QSP-VERT-RAIL-1777-2PK	70"	2

QUICK SCREEN™ VERTICAL TOP & BOTTOM RAIL

ORDER CODE: QSP-VR-BRAC-4PK



PROFILE	DESCRIPTION	LENGTH	QTY
	QSP-VR-BRAC-4PK		4

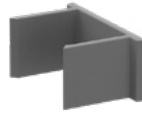


50 PACK
Spacer blocks
3/8" SPACERS

Order Code: **QSP-SPACER-9-50PK**

- Aluminum spacers
- Snaps into Quickscreen post
- Fast and easy install with post, slats and spacers

Powder coat colors —



50 PACK
Spacer blocks
1/2" SPACERS

Order Code: **QSP-SPACER-12.7-50PK**

- Aluminum spacers
- Snaps into Quickscreen post
- Fast and easy install with post, slats and spacers

Powder coat colors —



50 PACK
Spacer blocks
1" SPACERS

Order Code: **QSP-SPACER-25.4-50PK**

- Aluminum spacers
- Snaps into Quickscreen post
- Fast and easy install with post, slats and spacers

Powder coat colors —

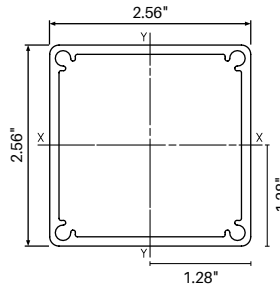


2 9/16" x 2 9/16" heavy duty post
95" & 108" LONG

Order Code: **QSP-65HD 2413/2743 FP**

Use with side frame.

Includes XP-65-TP post cap.



Powder coat colors —



TECH SPECS

- PP 255 / AP 255
- 2 9/16" x 2 9/16" larger profile, heavy duty post
- 0.125" wall thickness
- Screw flutes to screw on base plate if required
- Aluminum powder coated press-in top plate included with 8 foot posts
- bxx = 464.62 x 10E3 mmE4
- lyy = 464.62 x 10E3 mmE4

4x screw flutes in post allow tight fit of press in flat aluminum top plate.

Optional base plate can be attached using screw flutes for base plated post installations.

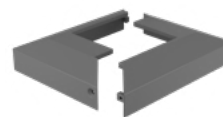


2.56"x2.56" post flat top plate
POWDER COATED ALUMINUM

Order Code: **XP-65-TP**

- Alloy ADC12 aluminum plate - .12" thick
- Press into post screw flutes for secure fixing
- 8 foot posts come with free top plate included - only purchases if extra top plates are required.

Powder coat colors —

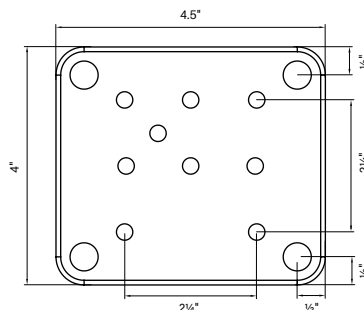
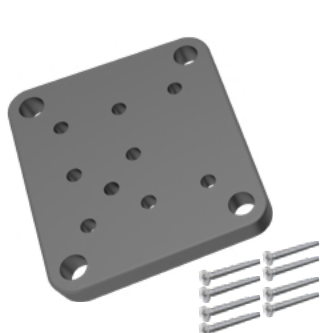


Two part domical cover
POWDER COATED ALUMINIUM

Order Code: **XP-65-DC-2P**

- Suits 2.56"x2.56" post with base plate
- 4.8"x4.17" outer - 2.64" x 2.64" inner
- Alloy ADC12
- Cover can be fitted to posts after fence is installed.

Powder coat colors —



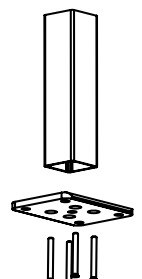
2.56"x2.56" post base plate set
1x base plate & screws

POWDER COATED Aluminum

Order Code: **XP-65BP-SET**

- 4.53"x4" base plate (.5" thick) with fixing holes
- Simply screw base plate into post screw flutes
- 12G CSK screws (SS304) included in set

IMPORTANT: MUST LUBRICATE SCREWS BEFORE FIXING



Powder coat colors —



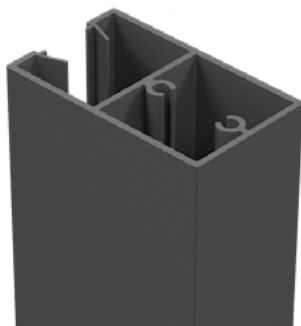
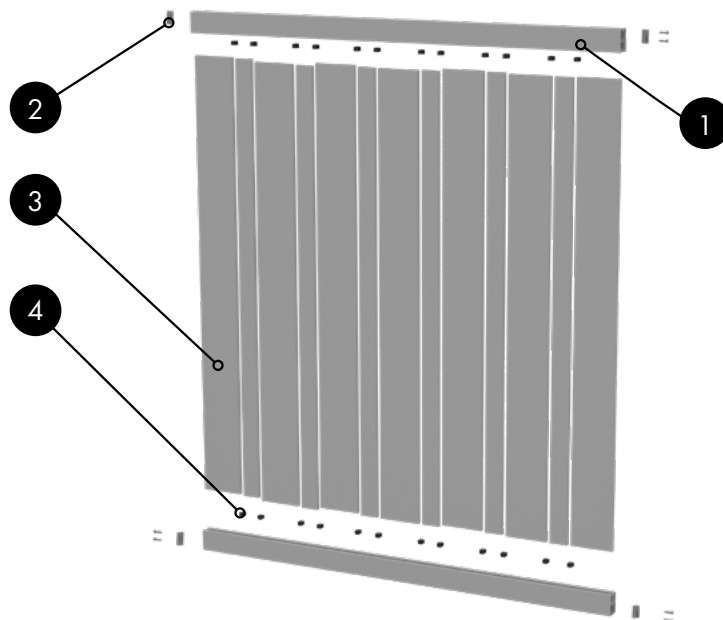
HEAVY DUTY VERTICAL 150 SERIES

1. Quickscreen Heavy Duty Top & Bottom rail 2pk

2. Quickscreen Top & Bottom rail clip - 2pk

3. 2.56" slot or 6" slot

4. Quickscreen $\frac{3}{8}$ " , $\frac{1}{2}$ " and 1" Aluminum snap in spacers available in 50 packs



Quickscreen Heavy Duty Top and Bottom Rail

84" long

Order Code: **QSP-HDGATE-TBRAIL-2134**
• Two required per fence panel



Quickscreen Heavy Top and Bottom Rail Fixing Clip

2 pack (one set per rail)

Order Code: **QSP-TBRAIL-CLIP-2PK**

- Two required per fence panel
- Includes 4 x screws



50 PACK Spacer blocks

$\frac{3}{8}$ " SPACERS

Order Code: **QSP-SPACER-9-50PK**

- Aluminum spacers
- Snaps into Quickscreen post
- Fast and easy install with post, slats and spacers

Powder coat colors —



50 PACK Spacer blocks

$\frac{1}{2}$ " SPACERS

Order Code: **QSP-SPACER-12.7-50PK**

- Aluminum spacers
- Snaps into Quickscreen post
- Fast and easy install with post, slats and spacers

Powder coat colors —



50 PACK Spacer blocks

1" SPACERS

Order Code: **QSP-SPACER-25.4-50PK**

- Aluminum spacers
- Snaps into Quickscreen post
- Fast and easy install with post, slats and spacers

Powder coat colors —



Quickscreen Post / Side Frame infill spacer 95"

Order Code: **QS-SPACER-2413**

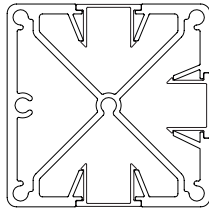
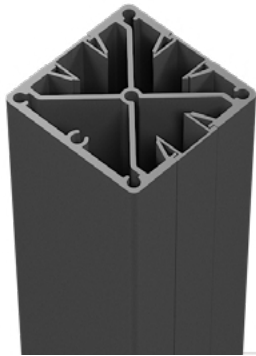
- Can use to modify post configuration
- Can be cut down for custom spacing or to fill gaps in on post.

Powder coat colors —



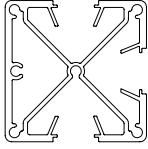
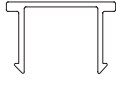
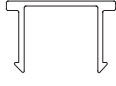
QUICK SCREEN™ 3 WAY POST

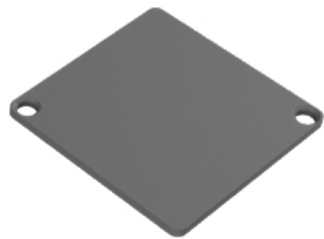
ORDER CODE: QSP-65HD-2413-3WAY



Powder coat colors —

B

PROFILE	DESCRIPTION	LENGTH	QTY
	2.56" x 2.56" 3 Way Post	95"	1
	Post Insert	24"	2
	Post Insert	95"	1



3 Way Post Flat Top Plate POWDER COATED ALUMINUM

Order Code: QS-3WTP

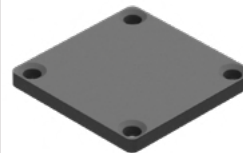
- Alloy ADC12 aluminum plate .12" thick
- 2 x 14G screws included

Powder coat colors —

B

G

W



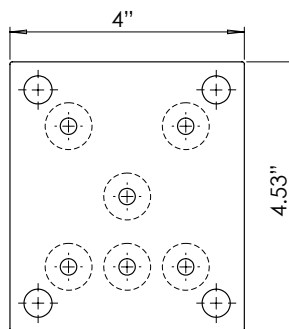
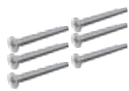
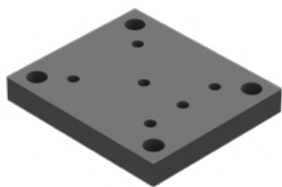
3 Way Post Flat Top Plate UV Stabilised Acrylic

Order Code: QSP-3WTP-B

- .24" wall thickness
- 4 x 14G screws included

Powder coat colors —

B



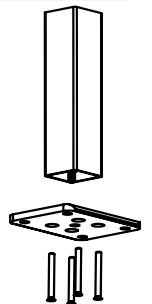
3 way post base plate set

1x base plate & screws

POWDER COATED Aluminum

Order Code: QS-3WBP-SET

- 4.53"x4" base plate (.5" thick) with fixing holes
- Simply screw base plate into post screw flutes
- 14G Hex head zinc flake screws (QTY 6) included in set



Powder coat colors —

B

G

W



Two part domical cover

POWDER COATED ALUMINIUM

Order Code: XP-65-DC-2P

- Suits 2.56"x2.56" post with base plate
- 4.8"x4.17" outer - 2.64" x 2.64" inner
- Alloy ADC12
- Cover can be fitted to posts after fence is installed.

Powder coat colors —

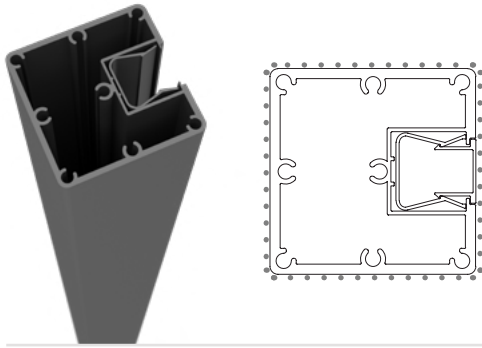
B

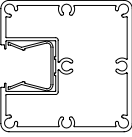

G

W

QUICK SCREEN POSTS - 1 WAY POSTS BOXED

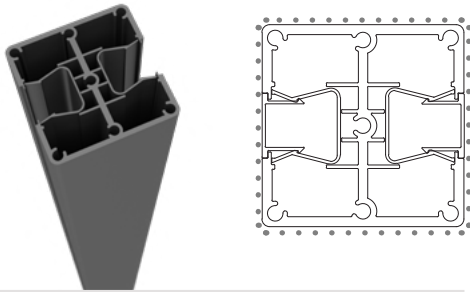
ORDER CODE: QSP-65HD-2413-1WAY

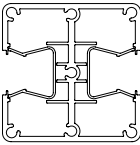
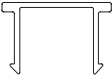


PROFILE	DESCRIPTION	LENGTH	QTY
	2.56" x 2.56" 1 Way Post	95"	1
	Post Insert	24"	1

QUICK SCREEN POSTS - 2 WAY POSTS BOXED

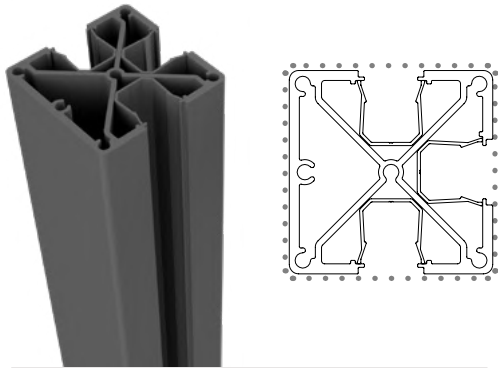
ORDER CODE: QSP-65HD-2413-2WAY

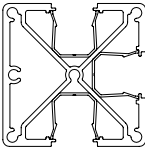
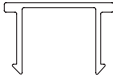
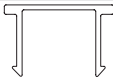


PROFILE	DESCRIPTION	LENGTH	QTY
	2.56" x 2.56" 2 Way Post	95"	1
	Post Insert	24"	2

QUICK SCREEN™ POSTS - CORNER 3 WAY POSTS BOXED

ORDER CODE: QSP-65HD-2413-CNR-T



PROFILE	DESCRIPTION	LENGTH	QTY
	2.56" x 2.56" Cnr T Post	95"	1
	Post Insert	24"	2
	Post Insert	95"	1



SCAN ME
INSTALLATION





Post flat top plate
POWDER COATED ALUMINUM
Order Code: **XP-65-TP**

- Alloy ADC12 aluminum plate - .12" thick
- Press into post screw flutes for secure fixing

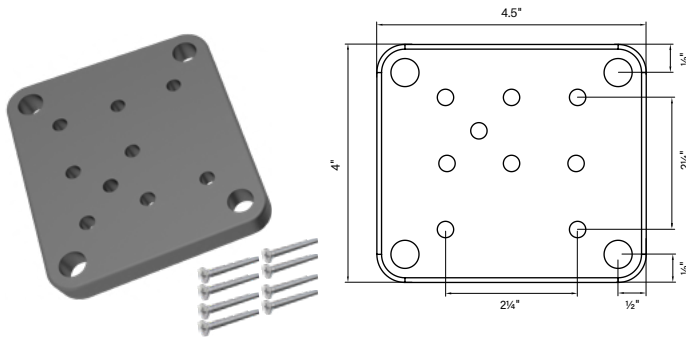
Powder coat colors —



1 way/2 way post flat top plate
POWDER COATED ALUMINUM
Order Code: **QS-TP**

- Alloy ADC12 aluminum plate - .12" thick
- 8 foot posts come with free top plate included - only purchase if extra top plates are required

Powder coat colors —



Post base plate set (suits full post, 1 way, 2 way and corner post)

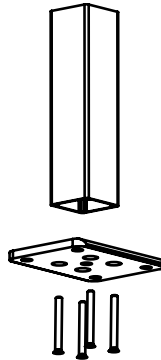
1x base plate & screws
POWDER COATED Aluminum

Order Code: **XP-65BP-SET**

- 4.53"x4" base plate (.5" thick) with fixing holes
- Simply screw base plate into post screw flutes
- 12G CSK screws (SS304) included in set

IMPORTANT: MUST LUBRICATE SCREWS BEFORE FIXING

Powder coat colors —



Two part domical cover
POWDER COATED Aluminum
Order Code: **XP-65-DC-2P**

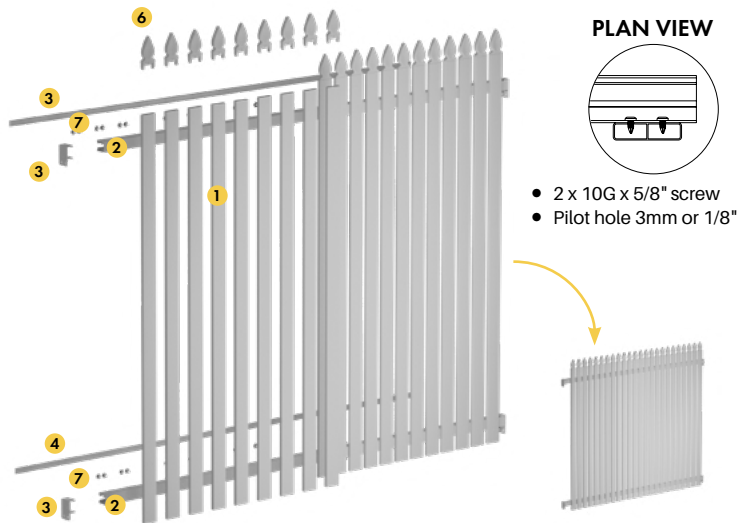
- Suits 2.56"x2.56" post with base plate
- 4.8"x4.17" outer - 2.64" x 2.64" inner
- Alloy ADC12
- Cover can be fitted to posts after fence is installed.

Powder coat colors —



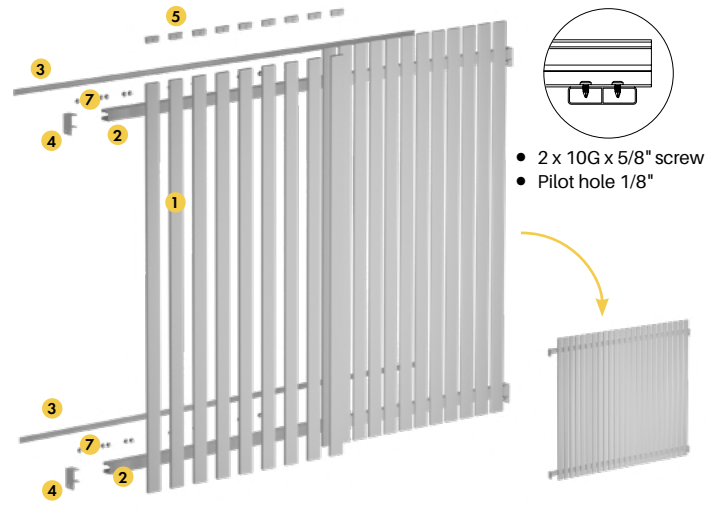
FEDERATION/PICKET FENCING

NO WELDING REQUIRED



PALING FENCING

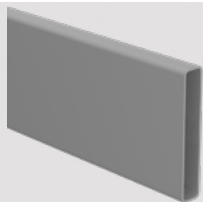
NO WELDING REQUIRED



Aluminum slat installed vertically allows for a number of stylish design options including radiator/blade fencing or picket top fencing. A significant advantage of powder coated aluminum is the minimal ongoing maintenance required.

GO's systems allow for easy NON-WELD assembly achieved via hidden screw fixings. The innovative horizontal top & bottom rails have an open back cavity allowing easy entry for screw fixing of slats. Screws are hidden by a simple snap in cover giving a seamless finish.

The simple screw fix system provides a significant cost saving versus traditional fully welded/fabricated panels.



1

2.56\" x .65\" slat with center web
Refer Page 4



2

Quickscreen Vertical Rail
Refer Page 28



3

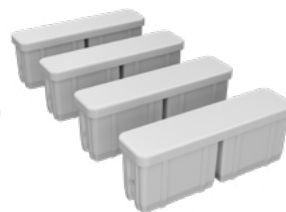
Post Spacer
Refer Page 30



4

HORIZONTAL BRACKET PAIR
Order Code: XBAT-BH20

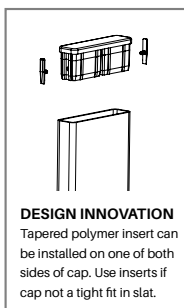
- Aluminum die cast 383
- Brackets fit to inner face of post or wall
- 3 sided opening - brackets can be pre-installed then install rail onto bracket opening.
- Pack of 2 - Open side
- Affix brackets to post or wall



5

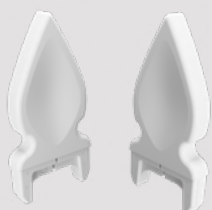
2.56\" SLAT CAPS
Order Code: XP-EC65-4PK

- Alloy ADC12 aluminum flat end cap
- Available powder coated or mill finish
- Suits 2.56\" x .65\" slat
- Press into end of slat
- Innovative design feature with polymer inserts ensures tight press in fit (inserts supplied with every cap)
- Internally slotted allowing end cap to be used with webbed or non-webbed slats
- Sold as a 4 pack

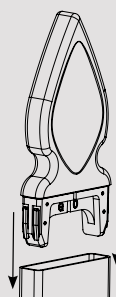


6 FEDERATION TOPPER

Order Code: XP-FEDTOP-4PK



- Use to achieve a vertical picket fence look
- Alloy ADC12 aluminum federation topper
- Suits 2.56\" x .65\" slat
- Available powder coated pearl white or mill finish
- Press into end of slat
- Innovative design feature with polymer inserts ensures tight press in fit (inserts supplied)
- Internally slotted allowing end cap to be used with webbed or non-webbed slats
- Sold as a 4 pack



7

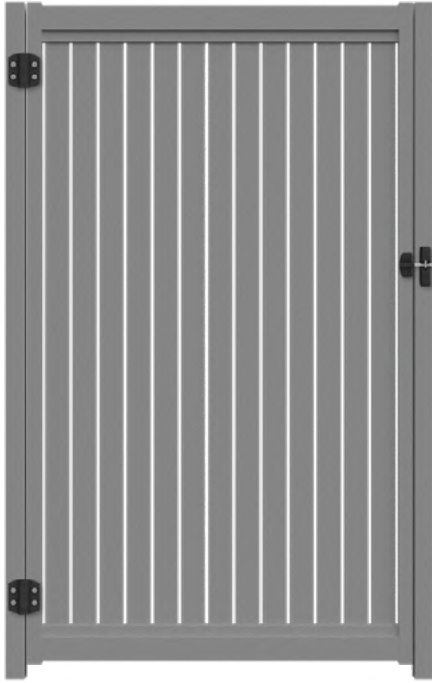
Self drilling wafer screws
Order Code: XP-SCREWS



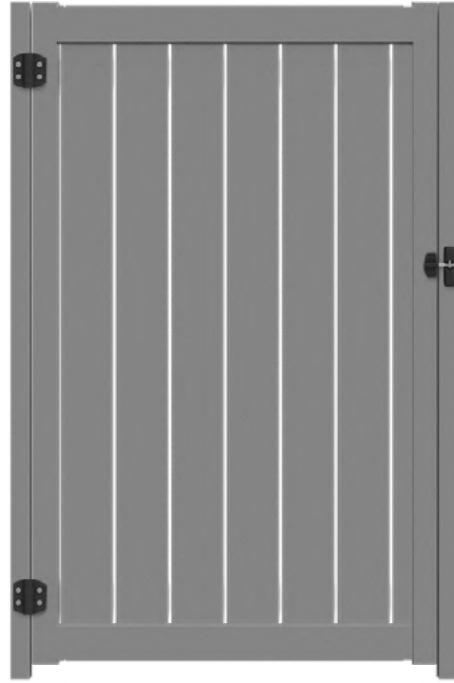
Pan head screws

- Bags of 100 - 10Gx.63\" self drilling
- Mill finish

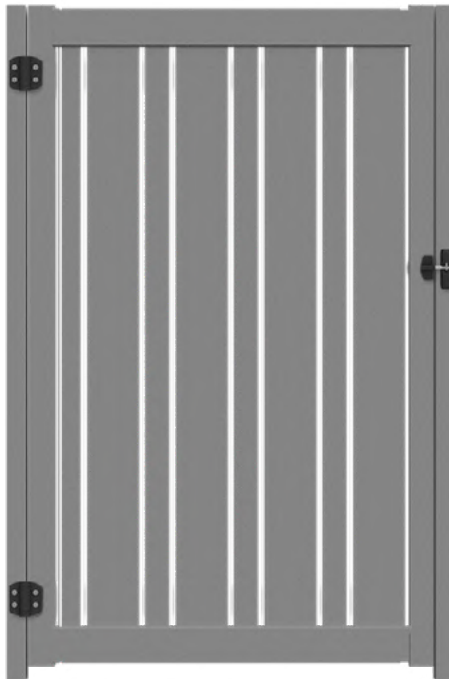
QUICK SCREEN™ VERTICAL GATES



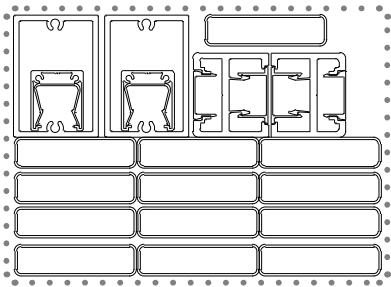
VERTICAL 65 SERIES GATE



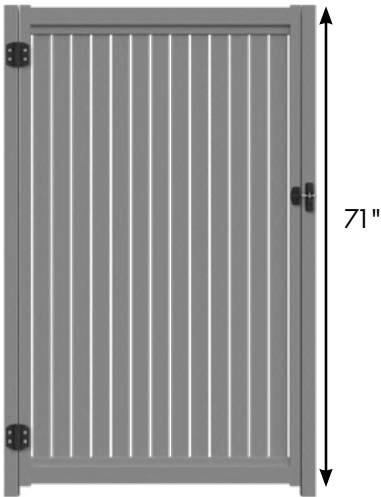
VERTICAL 150 SERIES GATE



VERTICAL COMBO GATE



48 1/4" - 49"
(includes gate hardware variation)



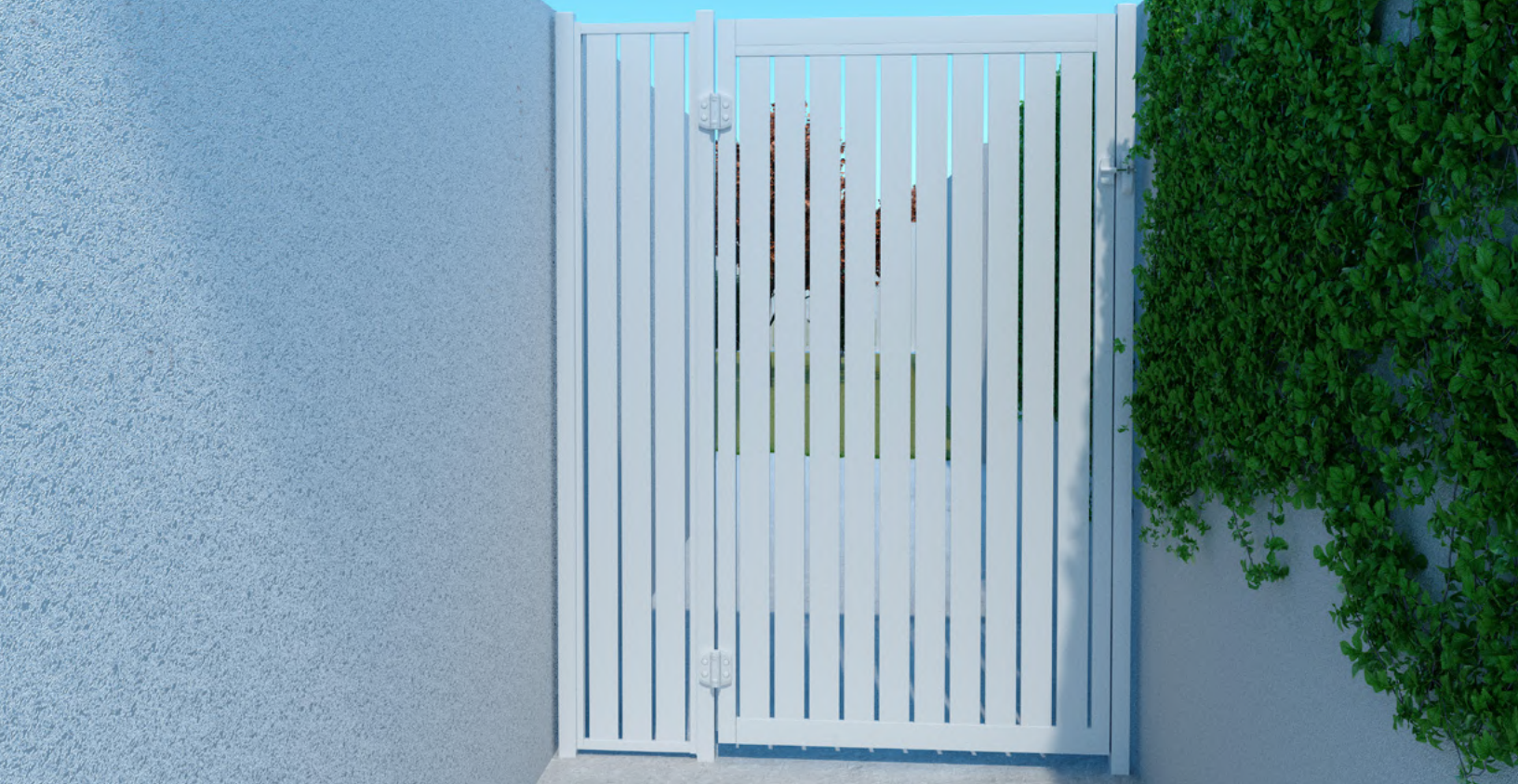
HEIGHT AND WIDTH ADJUSTABLE

Powder coat colors —



PROFILE	DESCRIPTION	LENGTH	QTY
	1.1" x 1.26" Side Frame with Friction Fit Insert and Aluminum Caps	44"	2
	Gate Side Frame with Screw Cover and unpunched insert	71"	2
	Top and Bottom Gate Rail	44"	2
	2.56" x 0.65" slat	65"	15
	Spacer Blocks		32pcs
	Instruction Sheet		1

Images & drawings are not to scale



HEAVY DUTY VERTICAL GATE SYSTEM

1. Quickscreen Heavy Duty Vertical Top & Bottom rail 2pk

2. Quickscreen Heavy Duty Gate Frame 71" and 95" long
(Qty 2 per gate)

3. 2.56" slat or 6" slat

4. Quickscreen $\frac{3}{8}$ ", $\frac{1}{2}$ " and 1" Aluminum snap in spacers
available in 50 packs

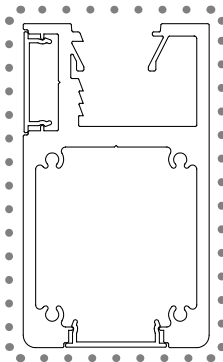
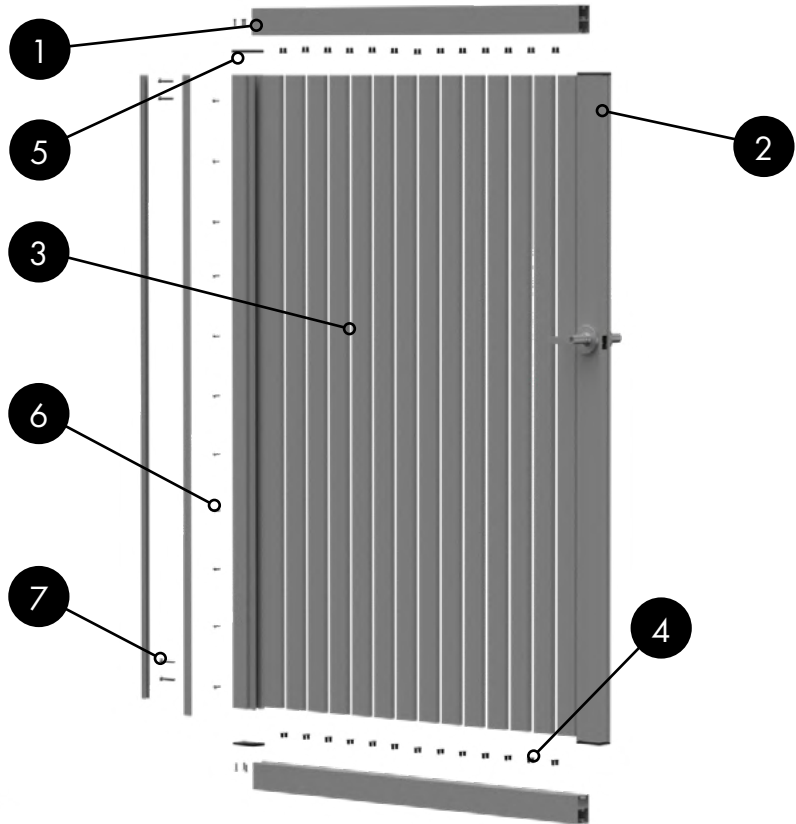
5. Quickscreen Heavy Duty Gate Frame Cap 2 Pack (Qty
one per frame - 2 per gate)

6. QSP-HDGF-SCREWS-50PK

Self Drilling Screw Wafer #10-24x3/4" Zinc Flake

7. Gate Frame Screws 16PK

12Gx2.55" Hex Flange Head

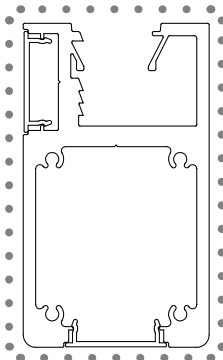


Heavy Duty Gate Frame

71" long

Order Code: **QSP-HDGATE-1804-FR**

- PP 534 / AP534
- .125" wall thickness with .2" center web
- .125" radius corners



Heavy Duty Gate Frame

95" long

Order Code: **QSP-HDGATE-2413-FR**

- PP 534 / AP534
- .125" wall thickness with .2" center web
- .125" radius corners



Self drilling screw wafer

#10 x 3/4"

Zinc Flake

Order Code: **QSP-HDGFSCREW-50PK**



Heavy duty gate frame cap (2 pack)

Black Acrylic

Order Code: **QSP-HDGF-2PK**

- Includes 8 Screws



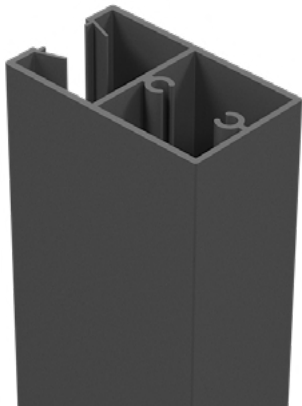
PACK OF 16

Gate frame screws

12Gx2.56" HEX FLANGE HEAD

Order Code: **XP-SCREWSGF-16PK**

- Use to secure gate slats to gate side frame
- Hex flange head for easy assembly

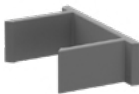


Quickscreen Heavy Duty Top and Bottom Rail

84" long

Order Code: **QSP-HDGATE-TBRail-2134**

- Two required per fence panel



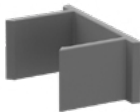
**50 PACK
Spacer blocks**

3/8" SPACERS

Order Code: **QSP-SPACER-9-50PK**

- Aluminum spacers
- Snaps into Quickscreen post
- Fast and easy install with post, slats and spacers

Powder coat colors —



**50 PACK
Spacer blocks**

1/2" SPACERS

Order Code: **QSP-SPACER-12.7-50PK**

- Aluminum spacers
- Snaps into Quickscreen post
- Fast and easy install with post, slats and spacers

Powder coat colors —



**50 PACK
Spacer blocks**

1" SPACERS

Order Code: **QSP-SPACER-25.4-50PK**

- Aluminum spacers
- Snaps into Quickscreen post
- Fast and easy install with post, slats and spacers

Powder coat colors —



Quickscreen Post / Side Frame infill spacer 95"

Order Code: **QS-SPACER-2413**

- Can use to modify post configuration
- Can be cut down for custom spacing or to fill gaps in on post.

Powder coat colors —



GATE HARDWARE & ACCESSORIES

0.75"
gap spacing

1
alignment leg



One alignment leg on hinge allows for quick and sturdy fixing on one side with flexible positioning on the other side

TRUClose® HEAVY DUTY

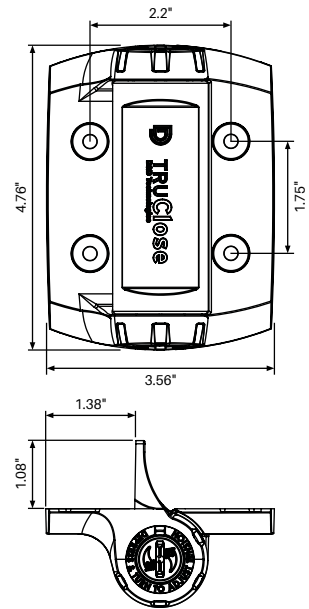
TruClose® hinge pair Heavy duty

1 ALIGNMENT LEG

D&D code: TCHD1AS3BT

Order Code: TC-H-AT-HD-B

- D&D patented tension adjustment
- Strong, moulded polymer and stainless steel
- Adjust tension from both ends of the hinge
- No visible fixings
- Decorative trim covers available in black finish
- Super strong engineering polymers and stainless steel components
- Won't rust, bind, sag or stain
- Limited lifetime warranty
- Pool fencing compliant - Rated for gates up to 150lbs



0.59" - 1.57"
gap spacing

KEYED TO DIFFER



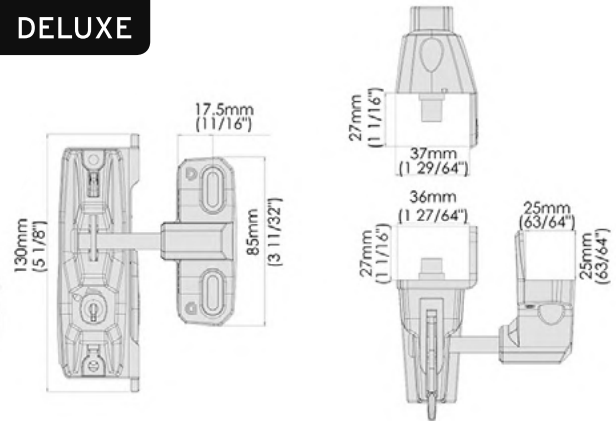
LOKKLatch® DELUXE

LokkLatch® deluxe

D&D code: LL3PWA

Order Code: LL-DL

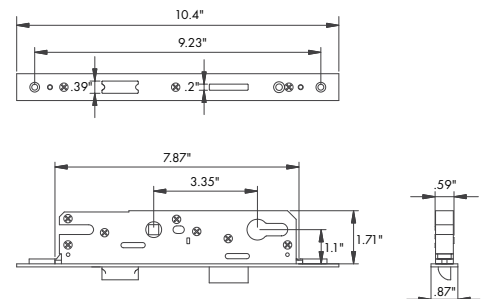
- Lockable from both sides of gate
- Locks are keyed alike
- Rekeyable, 6-pin security lock
- Fits up to 6" deep posts
- Black polymer



Mortise Lock - Heavy Duty Gate

Order Code: QS-MORT-LOCK

- Slimline mortise lock kit includes 2 x lever handles, face plate, lock mechanism, striker and 2 keys.
- Lock suits Quickscreen Heavy Duty Gate Frame.
- Dual locking mechanism with deadlock.
- Keyed both sides and lock / unlock both sides.
- Allow 3/8" gap between gate stile & latch post.



QUICK SCREEN

FULL PRIVACY SYSTEM

We are excited to offer this new system as an attractive alternative to current full privacy systems in the market. Our core goal with this product was to provide a full privacy fencing system with all the benefits of aluminum at a price that makes it available to a greater section of the market.

We achieve this with a slimline T&G board that we have designed to be very strong whilst light weight. Our T&G board uses a combination of intelligent extrusion design and structural grade alloys to achieve this. We further compliment the system through the adaption of our patented friction fit technology to provide a framing system that is very quick to assemble on site.

As a business opportunity all the numbers stack up well considering the possible market penetration this product has due to its price point.

For more information on distribution of this product please call.



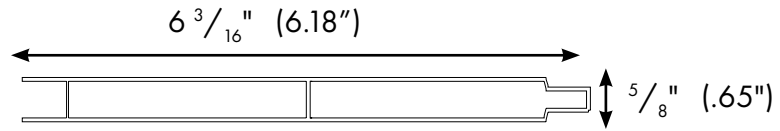
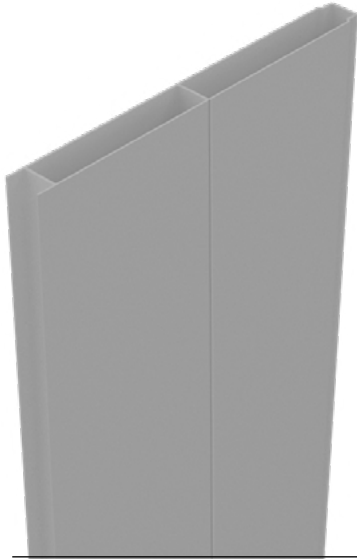
HIGHEST QUALITY FINISHES

Our range of genuine AAMA 2603 powder coat finishes has been carefully selected to include the most sought after colors on offer.

All components are suitably pre-treated prior to powder coating and are applied by fully accredited coating facilities.

B Black SATIN	W Pearl white GLOSS
	G Woodland gray MATT

FULL PRIVACY BOARD

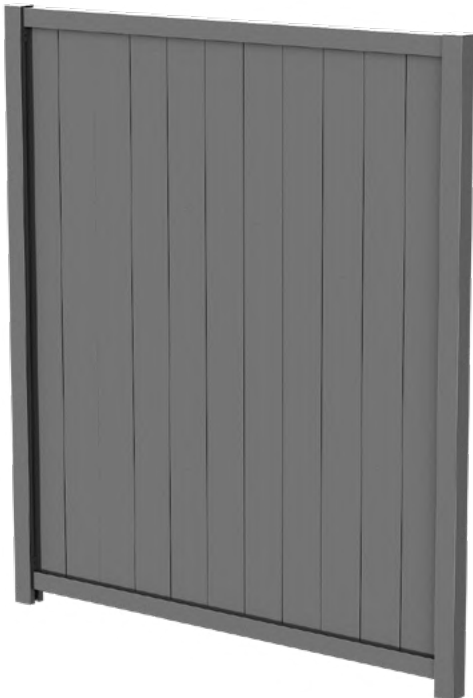


WALL THICKNESS: $\frac{1}{16}''$ (.05")

F*_{TU} - 262MPa (.06" wall)

$5 \frac{15}{16}''$ (5.91") Coverage

NOTE: IMAGES AND DRAWINGS NOT TO SCALE

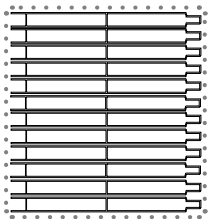


FULL PRIVACY VERTICAL



FULL PRIVACY HORIZONTAL

QUICK SCREEN FULL PRIVACY PANELS



PROFILE	DESCRIPTION	LENGTH	QTY
	QFP-1804TGB	71"	12

Quickscreen Full Privacy Panel 6' long 12 pack
Order Code: QFP-1804TGB-12PK



PROFILE	DESCRIPTION	LENGTH	QTY
	QFP-1804TGB	71"	1

Quickscreen Full Privacy T & G Board - 6" x 5/8" @ 71" long
Order Code: QFP-1804TGB

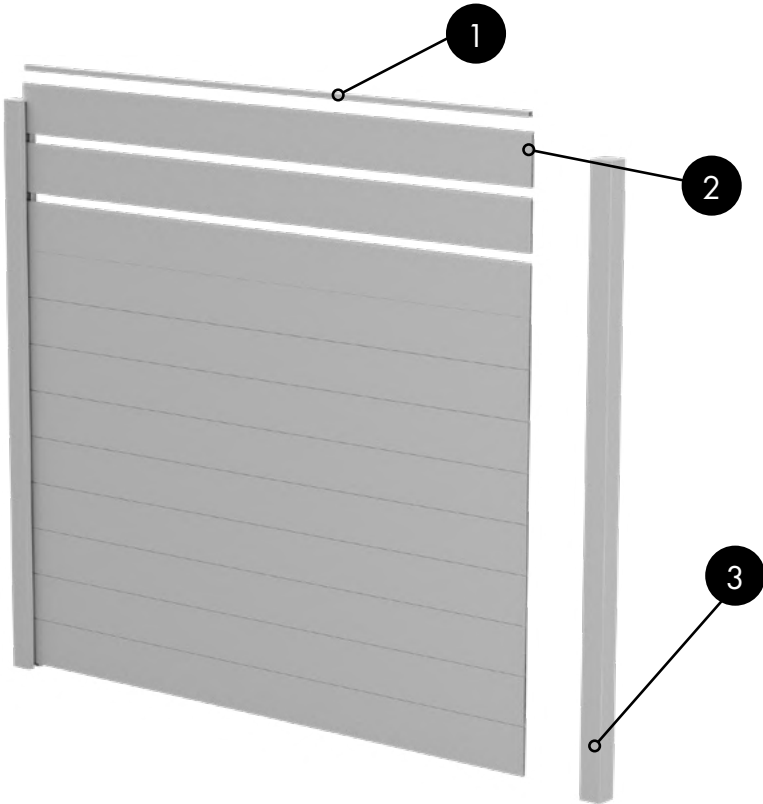


PROFILE	DESCRIPTION	LENGTH	QTY
	QFP-1804TGB	95"	1

Quickscreen Full Privacy T & G Board - 6" x 5/8" @ 95" long
Order Code: QFP-2415TGB

QUICK SCREEN HORIZONTAL FULL PRIVACY SYSTEM

- 1. Quickscreen Full Privacy Horizontal Capping Rail
- 2. Quickscreen Full Privacy T&G Board
- 3. 1 Way, 2 Way, 3 Way or Corner Posts



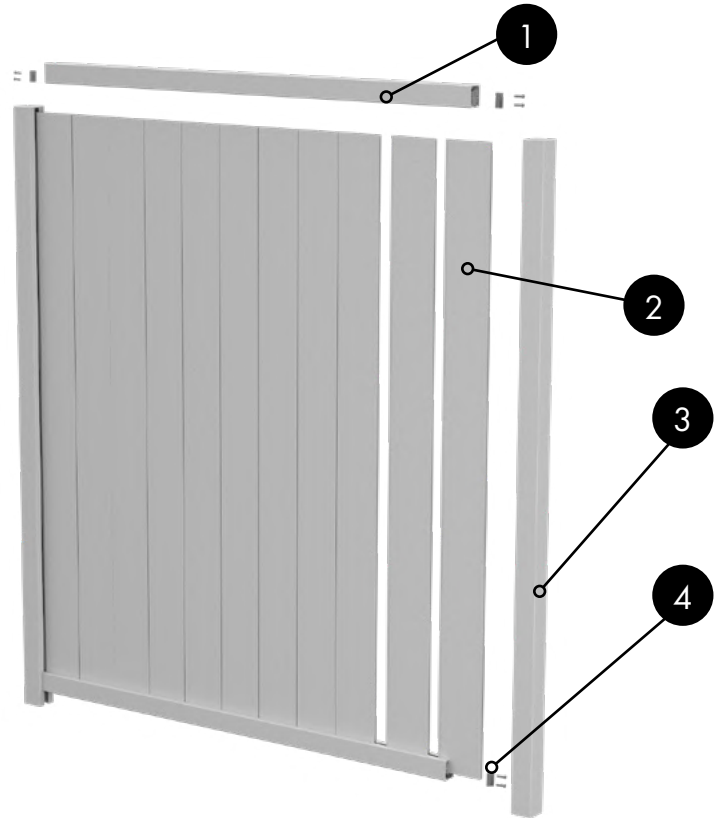


Quickscreen Full Privacy Horizontal Capping Rail

71" long

Order Code: QFP-150-1804FPHC

QUICK SCREEN VERTICAL FULL PRIVACY SYSTEM

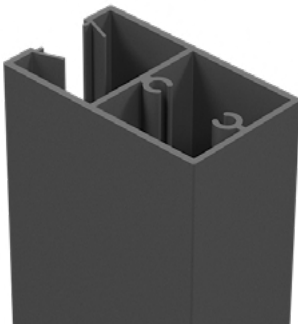


1. Quickscreen Heavy Duty Top and Bottom Rail

2. Quickscreen Full Privacy T&G Board

3. 1 Way, 2 Way, 3 Way or Corner Posts

4. Quickscreen Top and Bottom Rail Clip 2PK



Quickscreen Heavy Duty Top and Bottom Rail

84" long

Order Code: QSP-HDGATE-TBRail-2134

• Two required per fence panel



Quickscreen Heavy Top and Bottom Rail Fixing Clip

2 pack (one set per rail)

Order Code: QSP-TBRail-CLIP-2PK

• Two required per fence panel



Quickscreen Post / Side Frame infill spacer 95"

Order Code: QS-SPACER-2413

• Can use to modify post configuration
• Can be cut down for custom spacing or to fill gaps in on post.

Powder coat colors —

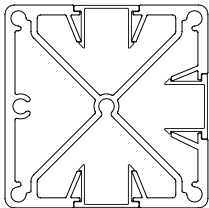
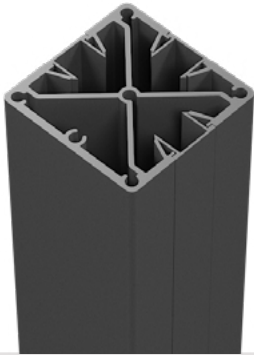
B

G

W

QUICK SCREEN™ 3 WAY POST

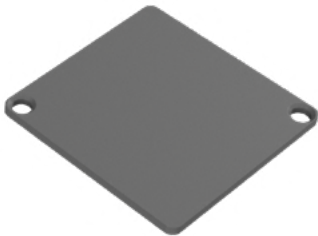
ORDER CODE: QSP-65HD-2413-3WAY



Powder coat colors —



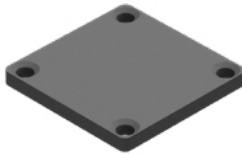
PROFILE	DESCRIPTION	LENGTH	QTY
	2.56" x 2.56" 3 Way Post	95"	1
	Post Insert	24"	2
	Post Insert	95"	1



3 Way Post Flat Top Plate
POWDER COATED ALUMINUM
Order Code: **QS-3WTP**

- Alloy ADC12 aluminum plate .12" thick
- 2 x 14G screws included

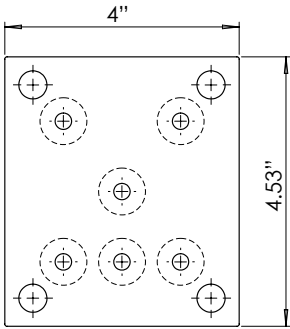
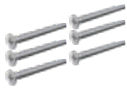
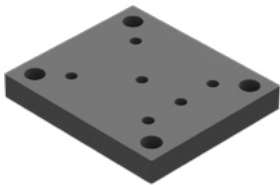
Powder coat colors —



3 Way Post Flat Top Plate
UV Stabilised Acrylic
Order Code: **QS-3WTP-B**

- .24" wall thickness
- 4 x 14G screws included

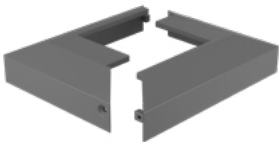
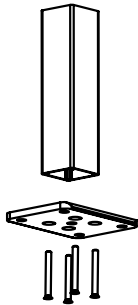
Powder coat colors —



3 way post base plate set
1x base plate & screws
POWDER COATED ALUMINUM
Order Code: **QS-3WBP-SET**

- 4.53"x4" base plate (.5" thick) with fixing holes
- Simply screw base plate into post screw flutes
- 14G Hex head zinc flake screws (QTY 6) included in set

Powder coat colors —



Two part domical cover
POWDER COATED ALUMINIUM
Order Code: **XP-65-DC-2P**

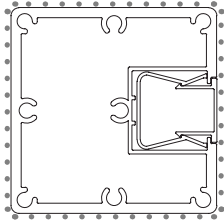
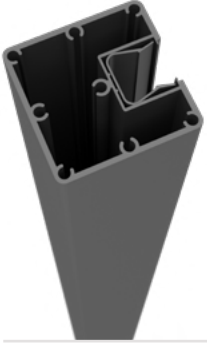
- Suits 2.56"x2.56" post with base plate
- 4.8"x4.17" outer - 2.64" x 2.64" inner
- Alloy ADC12
- Cover can be fitted to posts after fence is installed.

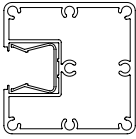

Powder coat colors —



QUICK SCREEN POSTS - 1 WAY POSTS BOXED

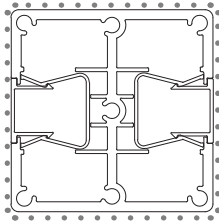
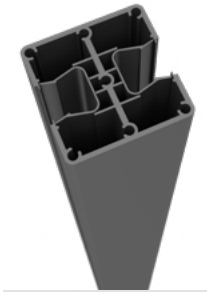
ORDER CODE: QSP-65HD-2413-1WAY

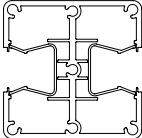
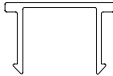


PROFILE	DESCRIPTION	LENGTH	QTY
	2.56" x 2.56" 1 Way Post	95"	1
	Post Insert	24"	1

QUICK SCREEN POSTS - 2 WAY POSTS BOXED

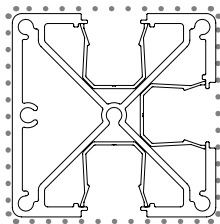
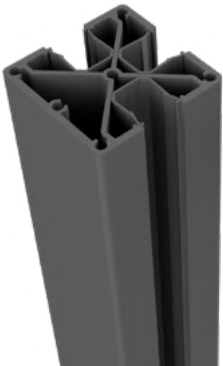
ORDER CODE: QSP-65HD-2413-2WAY

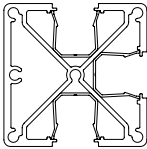




PROFILE	DESCRIPTION	LENGTH	QTY
	2.56" x 2.56" 2 Way Post	95"	1
	Post Insert	24"	2

QUICK SCREEN™ POSTS - CORNER 3 WAY POSTS BOXED

ORDER CODE: QSP-65HD-2413-CNR-T



PROFILE	DESCRIPTION	LENGTH	QTY
	2.56" x 2.56" 3 Way Post	95"	1
	Post Insert	24"	2
	Post Insert	95"	1



SCAN ME
INSTALLATION



Images & drawings are not to scale



Post flat top plate

POWDER COATED ALUMINUM

Order Code: **XP-65-TP**

- Alloy ADC12 aluminum plate - .12" thick
- Press into post screw flutes for secure fixing

Powder coat colors —



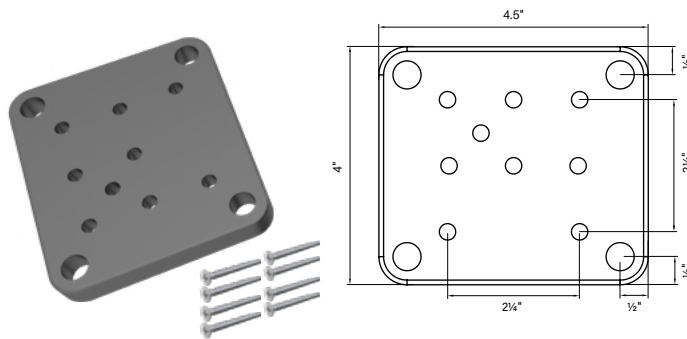
1 way / 2 way post flat top plate

POWDER COATED Aluminum

Order Code: **QS-TP**

- Alloy ADC12 aluminum plate - .12" thick
- 8 foot posts come with free top plate included - only purchase if extra top plates are required

Powder coat colors —



Post base plate set (suits full post, 1 way, 2 way and corner post)

1x base plate & screws

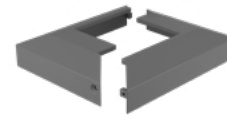
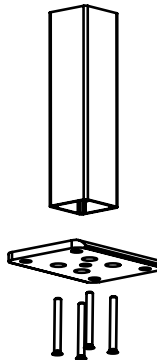
POWDER COATED Aluminum

Order Code: **XP-65BP-SET**

- 4.53"x4" base plate (.5" thick) with fixing holes
- Simply screw base plate into post screw flutes
- 12G CSK screws (SS304) included in set

IMPORTANT: MUST LUBRICATE SCREWS BEFORE FIXING

Powder coat colors —



Two part domical cover

POWDER COATED Aluminum

Order Code: **XP-65-DC-2P**

- Suits 2.56"x2.56" post with base plate
- 4.8"x4.17" outer - 2.64" x 2.64" inner
- Alloy ADC12
- Cover can be fitted to posts after fence is installed.

Powder coat colors —

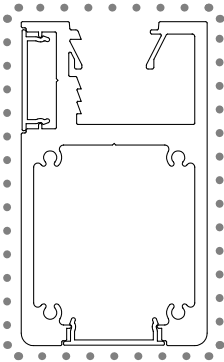
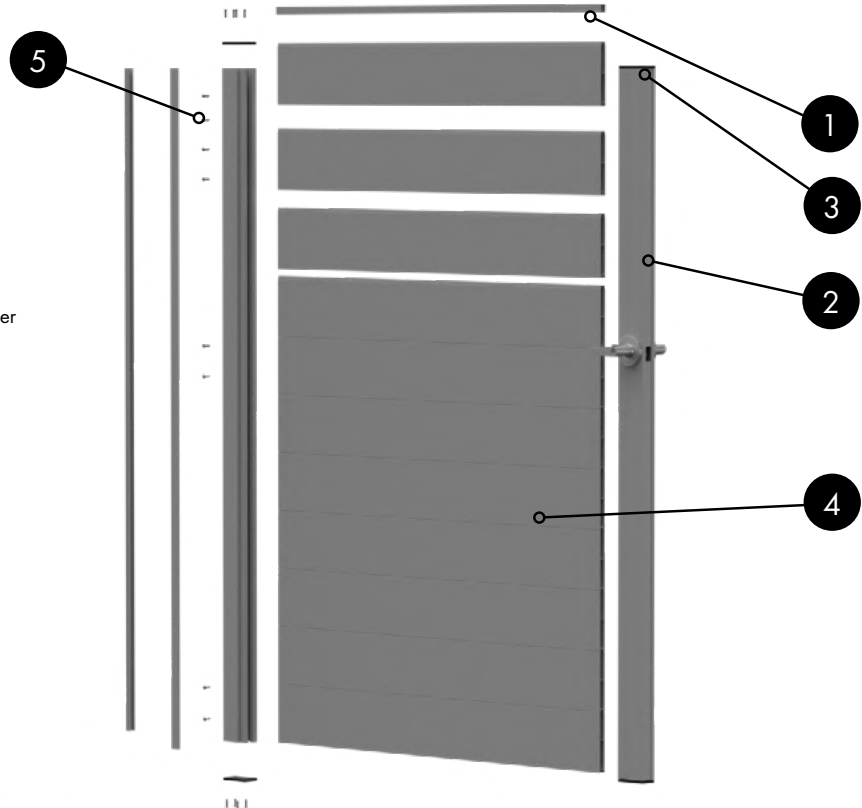


Images & drawings are not to scale



QUICK SCREEN HORIZONTAL FULL PRIVACY SYSTEM

1. Quickscreen Full Privacy Horizontal Capping Rail
2. Quickscreen Heavy Duty Gate Frame 71" long
(Qty 2 per gate)
3. Quickscreen Heavy Duty Gate Frame Cap 2 Pack (1 per frame, 2 per gate)
4. 6" Full Privacy T&G Board.
5. Quickscreen HD gate frame screws 50pk



Heavy Duty Gate Frame 71" long

Order Code: **QSP-HDGATE-1804-FR**

- PP 534 / AP534
- Alloy 6063 T6
- .125" wall thickness with .2" center web
- .125" radius corners

Heavy Duty Gate Frame 95" long

Order Code: **QSP-HDGATE-2413-FR**

- PP 534 / AP534
- Alloy 6063 T6
- .125" wall thickness with .2" center web
- .125" radius corners



Heavy duty gate frame cap (2 pack)

Black Acrylic

Order Code: **QSP-HDGFC-2PK**

- Includes 8 Screws



PACK OF 50 Gate frame screws

#10x³/₄" Zinc Flake

Order Code: **QSP-HDGFSCREW-50PK**



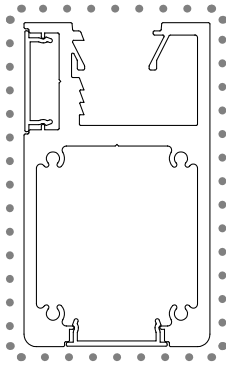
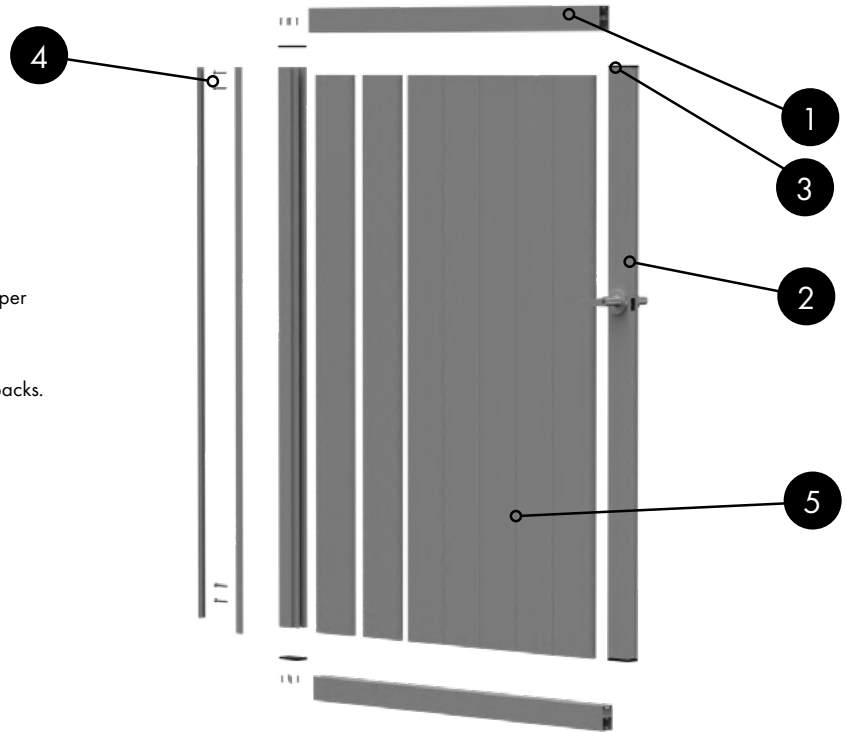
Quickscreen Full Privacy Horizontal Capping Rail

71" long

Order Code: **QFP-150-1804FPHC**

QUICKSCREEN VERTICAL FULL PRIVACY SYSTEM

1. Quickscreen Heavy Duty Top and Bottom Rail.
2. Quickscreen Heavy Duty Gate Frame 71" long (Qty 2 per gate)
3. Quickscreen Heavy Duty Gate Frame Cap 2 Pack (1 per frame, 2 per gate)
4. Quickscreen HD Gate frame screws available in 50 packs.
5. 6" Full Privacy T&G Board.



Heavy Duty Gate Frame

71" and 95" long

Order Code: **QSP-HDGATE-1804/2413-FR**

- PP 534 / AP534
- Alloy 6063 T6
- .125" wall thickness with .2" center web
- .125" radius corners



Quickscreen Heavy Duty

Top and Bottom Rail

84" long

Order Code: **QSP-HDGATE-TBRail-2134**

- Two required per fence panel



Heavy duty gate frame cap (2 pack)

Black Acrylic

Order Code: **QSP-HDGF-2PK**

- Includes 8 Screws



PACK OF 16

Gate frame screws

12Gx2.56" HEX FLANGE HEAD

Order Code: **XP-SCREWSGF-16PK**

- Use to secure gate slats to gate side frame
- Hex flange head for easy assembly

GATE HARDWARE & ACCESSORIES

0.75"
gap spacing

1
alignment leg



One alignment leg on hinge allows for quick and sturdy fixing on one side with flexible positioning on the other side

TRUClose® HEAVY DUTY

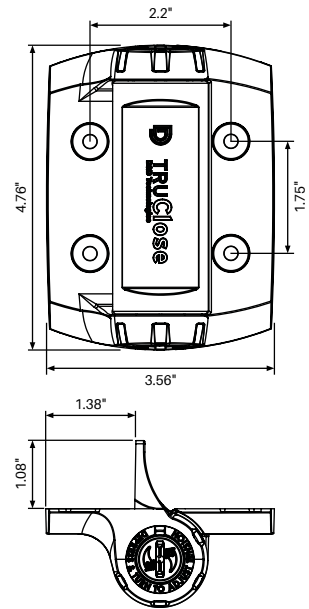
TruClose® hinge pair Heavy duty

1 ALIGNMENT LEG

D&D code: TCHD1AS3BT

Order Code: TC-H-AT-HD-B

- D&D patented tension adjustment
- Strong, moulded polymer and stainless steel
- Adjust tension from both ends of the hinge
- No visible fixings
- Decorative trim covers available in black finish
- Super strong engineering polymers and stainless steel components
- Won't rust, bind, sag or stain
- Limited lifetime warranty
- Pool fencing compliant - Rated for gates up to 150lbs



0.59" - 1.57"
gap spacing

KEYED TO DIFFER



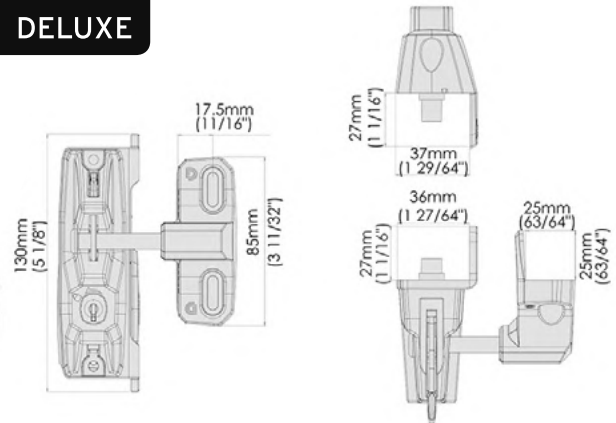
LOKKLatch® DELUXE

Lokk Latch® deluxe

D&D code: LL3PWA

Order Code: LL-DL

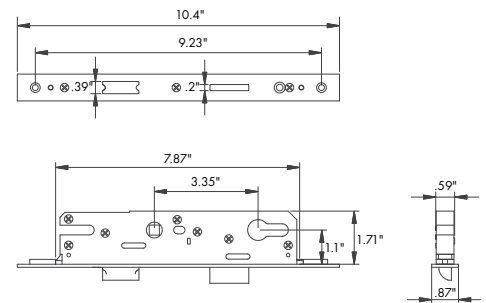
- Lockable from both sides of gate
- Locks are keyed alike
- Rekeyable, 6-pin security lock
- Fits up to 6" deep posts
- Black polymer



Mortise Lock - Heavy Duty Gate

Order Code: QS-MORT-LOCK

- Slimline mortise lock kit includes 2 x lever handles, face plate, lock mechanism, striker and 2 keys.
- Lock suits Quickscreen Heavy Duty Gate Frame.
- Dual locking mechanism with deadlock.
- Keyed both sides and lock / unlock both sides.
- Allow 3/8" gap between gate stile & latch post.



QUICK SCREEN SLIDING GATE OPTIONS

SELECT FROM A RANGE OF SLIDING GATE OPTIONS

You can now make an array of sliding gate designs using our new heavy duty gate frame and vertical top and bottom rail system.

This is achieved by creating multiple gate modules and then connecting them to each other using the gate frame as a joiner/midrail.

Save time and money without requirement of fully fabricating and welding.

Contact us for detailed assembly instructions.

Horizontal slat sliding gate.

2.56" or 6" slats or combination

with $\frac{3}{8}$ ", $\frac{1}{2}$ " or 1" slat spacing.

Patented 'no weld' gate side frames for fast assembly.

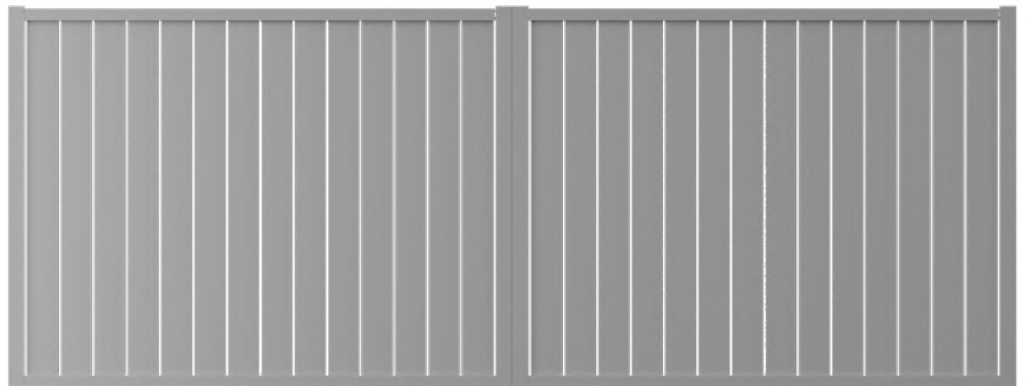


Vertical slat sliding gate.

2.56" or 6" slats or combination.

Variable slat spacing.

Each slat required to be screw fixed.



Full privacy vertical gate.

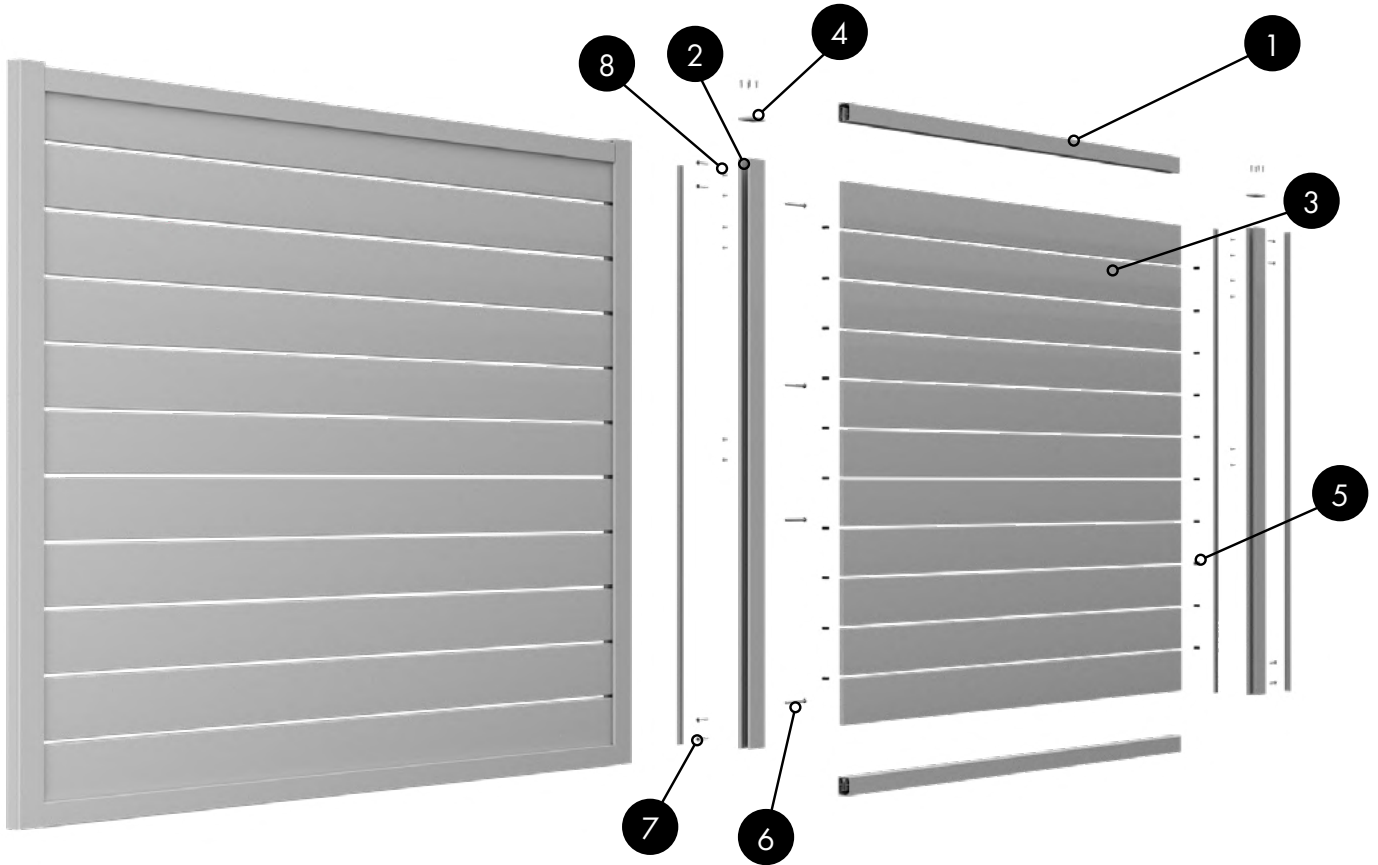
2.56" or 6" slats or combination.

Full privacy horizontal gate.

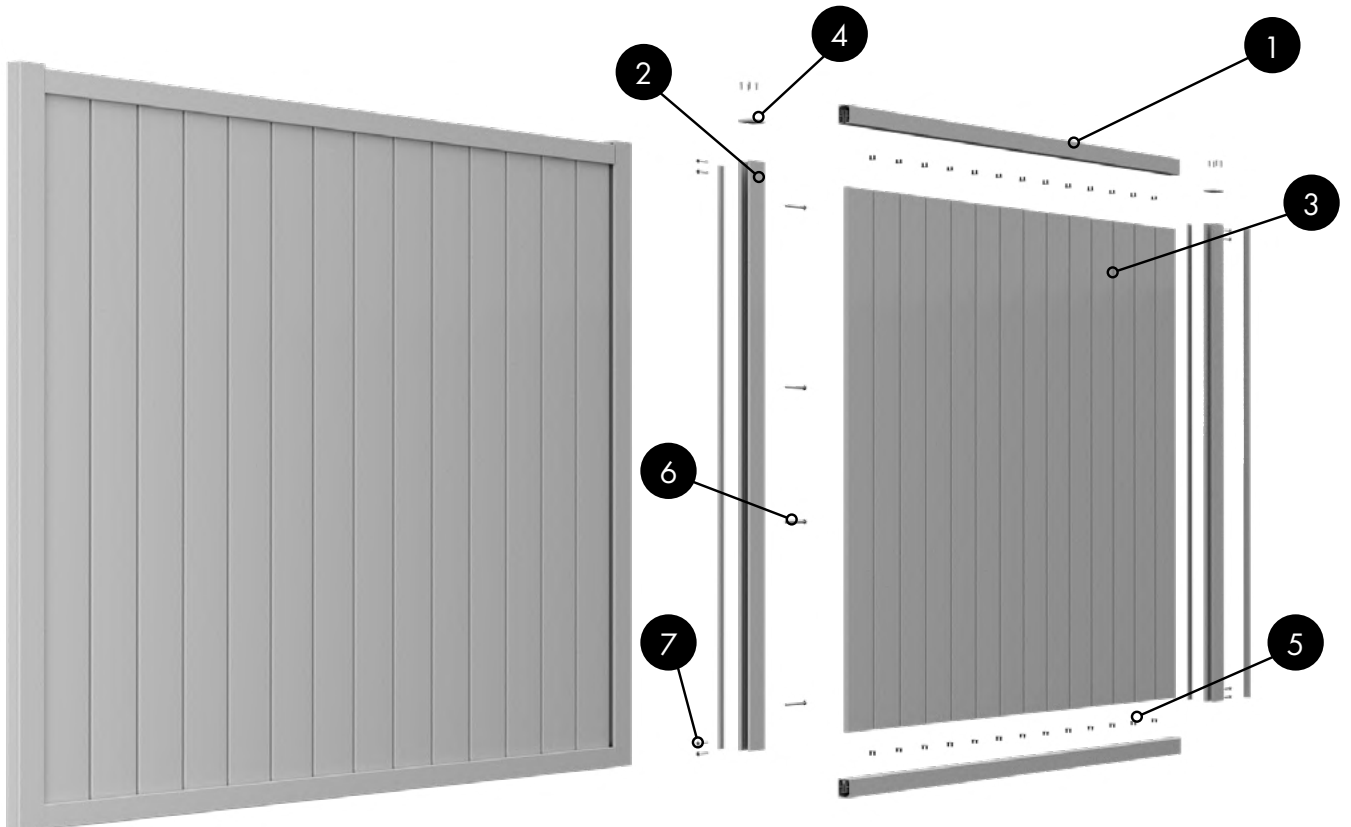
2.56" or 6" slats or combination.



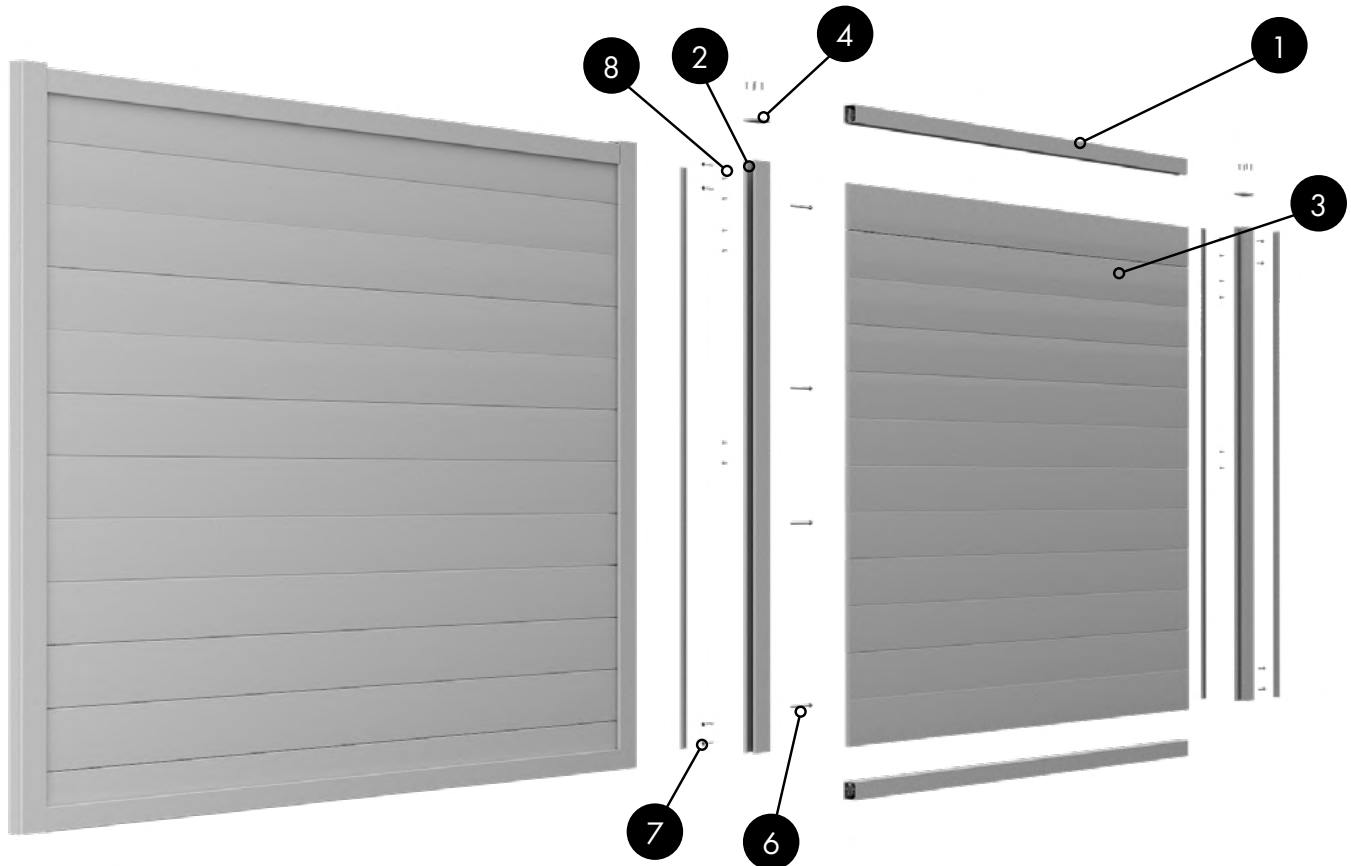
SLIDING GATE OPTIONS - HORIZONTAL SLAT



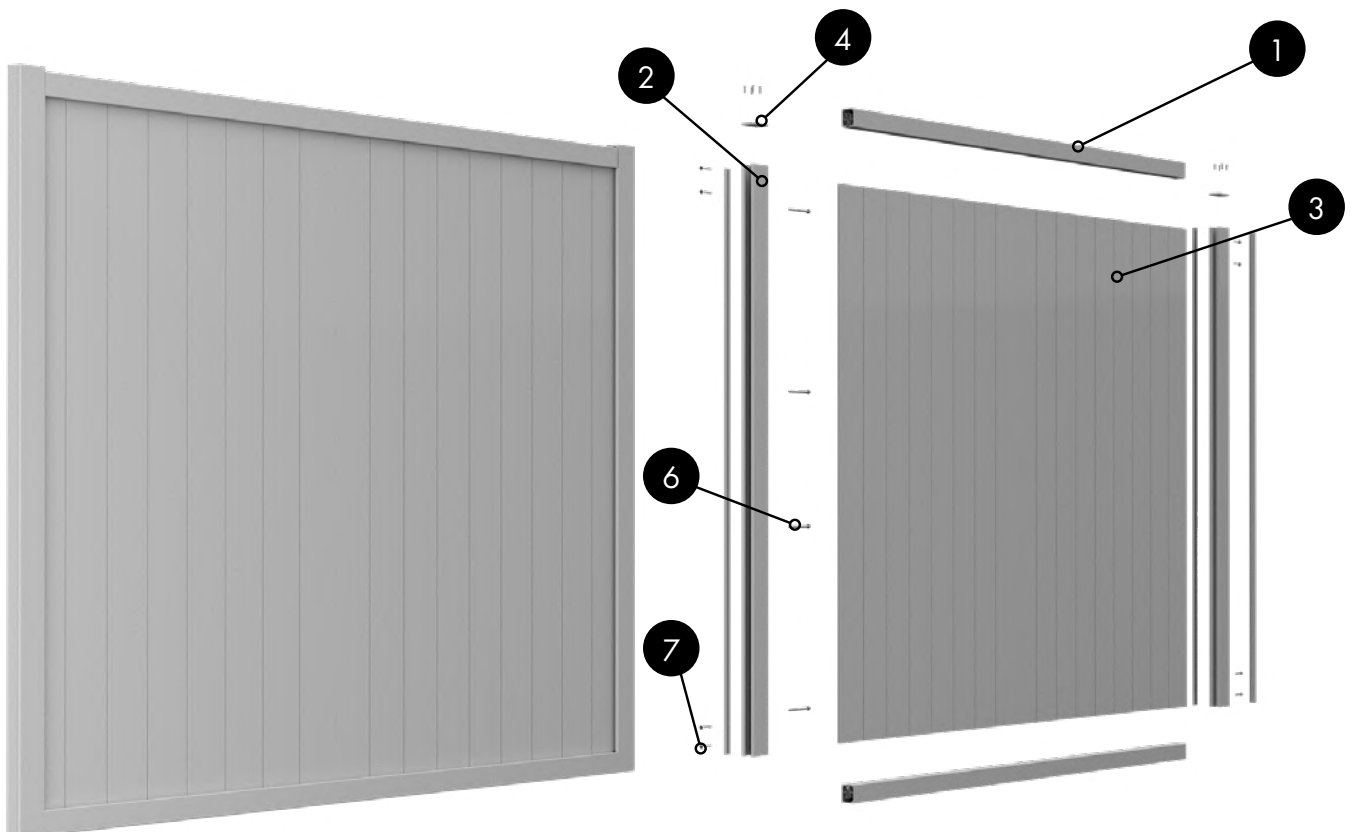
SLIDING GATE OPTIONS - VERTICAL SLAT

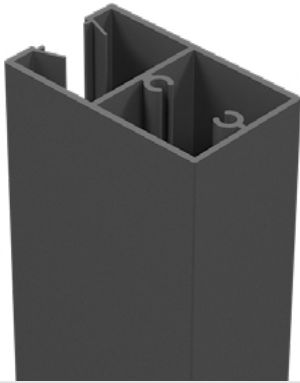


SLIDING GATE OPTIONS - FULL PRIVACY HORIZONTAL SLAT



SLIDING GATE OPTIONS - FULL PRIVACY VERTICAL SLAT





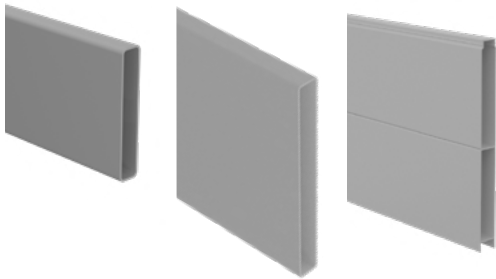
- 1**
**Quickscreen Heavy Duty
Top and Bottom Rail**
84" long
Order Code: QSP-HDGATE-TBAIL-2134
• Two required per gate panel



- 2**
Heavy Duty Gate Frame
71" and 95" long
Order Code: QSP-HDGATE-1804/2413-FR
• 2 required per gate panel

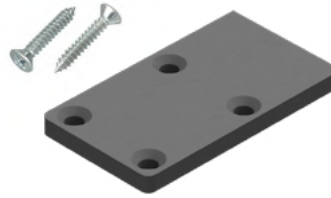
3

- 2.56", 6" or full privacy slat**
Refer page 4, 6 or 44



4

- Heavy duty gate frame
cap (2 pack)**
Black Acrylic
Order Code: QSP-HDGFC-2PK
• Includes 8 Screws



5

- 50 PACK**
Spacer blocks
 $\frac{3}{8}$ " SPACERS
Order Code:
QSP-SPACER-9-50PK



- 50 PACK**
Spacer blocks
 $\frac{1}{2}$ " SPACERS
Order Code:
QSP-SPACER-12.7-50PK



- 50 PACK**
Spacer blocks
1" SPACERS
Order Code:
QSP-SPACER-25.4-50PK



- Quickscreen infill spacer 95"**
Order Code:
QS-SPACER-2413



6



- Self Tapping Screws**
14Gx5" PAN HEAD
Order Code: QS-SLIDGATE-SCREW-4PK

7




- PACK OF 16**
Gate frame screws
12Gx2.56" HEX FLANGE HEAD
Order Code: XP-SCREWSGF-16PK

8



- PACK OF 50**
Gate frame screws
#10x $\frac{3}{4}$ " Zinc Flake
Order Code: QSP-HDGFSCREW-50PK



ALUMINUM OUTLET
2335 W Walnut Ave
Rialto CA 92376
☎ 310 765 1150

✉ sales@aluminum-outlet.com